

---

ECONOMICS OF HEALTH CARE SYSTEMS

---

# THE BLACK BOX OF HEALTH CARE EXPENDITURE GROWTH DETERMINANTS

PEDRO PITA BARROS<sup>a,b,\*</sup>

<sup>a</sup> *Universidade Nova de Lisboa, Lisboa, Portugal*

<sup>b</sup> *Centre for Economic Policy Research (CEPR), London*

## SUMMARY

In this paper, the determinants of growth of aggregate health expenditures are investigated. The study departs from previous literature in that it looks at differences across countries in growth (and not levels) of health care expenditures. Estimation is made for 24 OECD countries. Health system characteristics usually believed to influence health expenditures growth, like population ageing, the type of health system (public reimbursement, public contract or integrate) and existence of gatekeepers, are found to be non-significant. Nevertheless, there is evidence that health expenditures experienced a clear slower growth in the last decade. The explanation for this slowdown could not be found in the proposed model and should stimulate further research. © 1998 John Wiley & Sons, Ltd.

KEY WORDS — expenditures growth; health care spending

## INTRODUCTION

The health economics literature has seen, over the last two decades or so, a considerable number of studies trying to explain cross-country variations in health spending. Better databases have allowed for increased sophistication of analysis and more robust inferences (and policy implications). A good example of this line of research is found in Gerdtham *et al.* [1], which summarizes in a very clear way previous contributions and uses a larger pooled sample to perform new hypothesis tests.

However, surprisingly enough no attention has been given to explanations for health care expenditures *growth* differences across countries. This paper contributes (at least, partially) to a better understanding of growth in health care expenditures on the basis of cross-country and time-series variations. It is argued that existing literature on explanations of cross-country differences in health

care expenditures and the relative success of distinct health systems in cost-containment must be complemented with studies looking directly at growth rates of health care expenditure and its determinants. The analysis should, therefore, be understood as complementary to previous studies of level differences in health spending.

On theoretical grounds, the analysis of expenditure level differences explains what factors characterize less costly health care systems at a certain point in time, while analysis of growth rates indicates which systems favour a greater growth of health spending (even if the system converges to a lower steady-state value than other systems).

Policy recommendations on health system organization should not be based solely on studies on the level of health care expenditures. Understanding the pace of growth of health spending can be as important as understanding of level differences across health systems. For example, the analysis

---

\* Correspondence to: Faculdade de Economia, Universidade Nova de Lisboa, Travessa Estêvão Pinto, P-1070 Lisboa, Portugal. Tel: +351 13833624; Fax: +351 13886073; ppbarros@fe.unl.pt

in levels may find that certain characteristics of health systems favour lower costs. However, to say it also implies a lower *growth* rate is a different matter.

A study somewhat close to this paper is due to Newhouse [2]. Newhouse presents a health expenditures growth accounting analysis for the US. He concludes that about 50% of the increase in costs could not be explained by traditional factors and attributed it to technological progress.

The methodology of analysis is borrowed from recent empirical growth theory, namely works focusing on convergence. (Barro and Sala-i-Martin [3] provide a review of the most important studies in chapters 11 and 12.) It should be stressed that health-related variables (typically life expectancy type of variables) have been employed as regressors in GDP growth equations. Also, there is empirical evidence on the link between life expectancy at birth and GDP levels, where a positive but decreasing relation between life expectancy and per capita GDP is found. (See Barro and Sala-i-Martin [3], chapter 12.) There is, however, no received knowledge on the contribution of GDP growth to health expenditures growth. Therefore, we depart from the new growth empirical studies in this respect.

Before proceeding to the analysis and in order to motivate the reader, it is useful to look at dispersion of health expenditures per capita and how it has evolved over the least three decades. Only the countries for which a complete data set is available are included. There was, in the past 30 years, an increase in dispersion (measured by the S.D. in health expenditures per capita), showing that countries are moving apart on this matter.

However, average health expenditures per capita have also increased substantially, making the ratio of S.D. over the mean fairly stable since the mid 1970s (Figure 1), with a slight downward trend. From 1960 to 1975, there is a clear decrease in relative dispersion across countries. The same evolution pattern occurs in the dispersion of the share of health care expenditures on GDP, even if S.D. over the mean has remained stable. Computation of regressions of each variable on a constant term and a time trend, gives statistical support to the assertions made.

These basic stylized facts pose two interesting questions for researchers to answer. First, what causes this dispersion across countries (GDP level, characteristics of health systems, etc.)? The exist-

ing literature has mainly addressed this issue. Second, what lies behind the upward trend in health care expenditures and what are the best arrangements to act upon it? This question has seldom been analyzed and motivates the present paper.

Cost-containment goals are at the heart of most, if not all, reform proposals in the OECD countries (see OECD [7]). A recurrent theme in the literature is the relative success of different organizational frameworks for health care systems. Hence, it seems desirable to test which systems did promote a lower rise in health care expenditure. This test may yield different results from hypothesis tests based on levels of health care spending. It can be the case that for some structural reason a country has, at a given point in time, a higher level of health care expenditure, without any relation to the health system in place. In cross-country level analysis this effect may be, at least partially, attributed to the type of the health system instead of being identified with country characteristics. The recent work of Gerdtham *et al.* [1,4,5] deals with this issue in a different way. The use of pooled, cross-section time-series data in expenditure levels, with enough data in both dimensions, allows for the identification of country-specific effects in their work. Of course, these are not the only studies. Another example of work on this line is due to McGuire *et al.* [8].

The distinction between determinants of level and growth of health expenditures is by no means a trivial one. It is not possible, *a priori*, to estab-

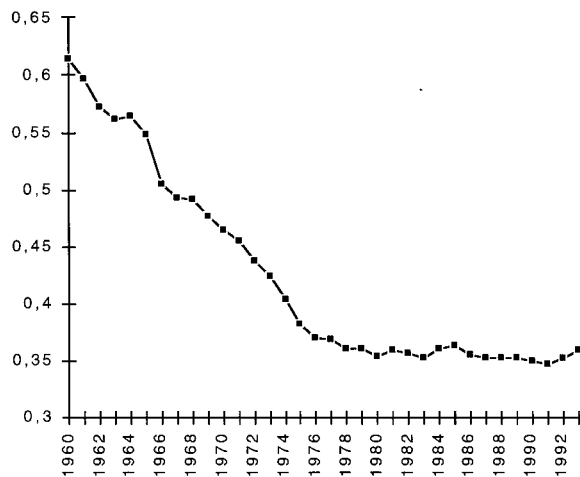


Figure 1. Ratio of standard deviation over average value.

lish a unique link saying that factors explaining cross-countries and over-time differences in the level of health care expenditures should also be the relevant ones to explain differences in growth rates. A health system that has a lower level of health expenditures may experience faster growth, for example. Also, health systems that performed relatively well in the sense of keeping health care spending at a low level may (or may not) be more vulnerable to growth, in a changing socio-economic environment. Systems that perform better in a certain moment may become, in the future, dominated.

Despite the small sample size our approach reveals some interesting results which, we hope, will stimulate further research. In particular, we found that the type of the health system, existence of a gatekeeping procedure and ageing of population are unable to explain average growth rates of health care expenditures. This leaves largely unexplained the slowdown in growth rates observed in the 1980s.

The paper is organized as follows. The second section describes the methodology followed. Next, the third section discusses the database used. The fourth section presents the empirical results. Finally, the fifth section concludes.

## METHODOLOGY

The aim of the paper is quite simple, and so is the empirical approach followed. Due to the small sample size, only a limited number of hypothesis can be tested. We focus on health system features that may have contributed to cost-containment.

Judging cost-containment measures is a tricky business. Besides evaluating whether or not cost-containment measures are desirable (or to which extent should be pursued), targeting a value for health care expenditures is more a political issue than an economic one. Nevertheless, evaluation of effectiveness of such measures (let aside efficiency considerations for the time being) is warranted. If such evaluation is made on a cross-section basis alone, it is probably not possible to tell what is due to reforms and measures undertaken and what should be attributed to other factors (like country characteristics). Looking at growth rates of health care expenditures and their determinants yields, potentially, useful knowledge on this ground.

The first hypothesis to be tested is whether or not those countries that already spent relatively more in health care were also the ones where expenditure grew more.

The dissemination of medical knowledge (which is made at an increasingly faster pace) and wide availability of new drugs and equipment suggests that countries may experience a tendency to have similar per capita expenditures. (This notion is close to the concept of  $\beta$ -convergence in growth theory. Note, however, that the reasoning underlying convergence theories cannot be applied to health care expenditure.) If this holds true, one should observe a higher growth rate in countries with initial lower expenditures level as they catch up with other countries. To test for the presence of a significant impact of the starting point, beginning of period values of the dependent variable are included in the econometric specifications.

Another important factor for health expenditure growth is, probably, GDP growth. In cross-country explanations of health care expenditure differences, GDP has been singled out as the most important explanatory variable. In fact, empirical studies systematically found that GDP accounts for more than 90% of the observed variation. Thus, cast in terms of growth rates, a positive association between GDP growth and health expenditure growth is expected.

Institutional features of health systems may influence health care expenditures growth rate. For example, fee-for-service rules do imply, in general, higher expenditures in health care than capitation schemes. Nonetheless, we cannot state that growth rates of health care expenditures will differ substantially in both systems.

To test for the importance of institutional arrangements on growth of health care expenditures two characteristics of health systems were included as possible determinants. The first is the OECD characterization of the health system as public reimbursement, public contract or public integrated. The second is the use of physicians/general practitioners as gatekeepers in the system.

Traditionally, ageing of population is pointed out as an important factor in rising health spending. The argument states that as people get older more health care will be delivered to them. Accordingly, a variable accounting for the ageing of population is also considered. Some recent work has seriously challenged this view [8–10]. However, to our knowledge, it has not been tested if

demographic evolution (ageing of population, more precisely) has any bearing on the growth of overall health care spending. Existing studies essentially look at spending for different age cohorts and are based on micro data. The main finding is that population ageing is of less importance for health care expenditures than usually held. Ageing has a strong impact on other aspects of the welfare state, like retirement pensions. Some extrapolation to health care services of this demographic pressure may have been made. Our direct test on growth rates complements these earlier studies.

The role of government financing has generated some controversy, as both positive and negative effects on total health care expenditure have been reported. Gerdtham *et al.* [1] provide a useful discussion of the empirical findings. Moreover, Gouveia [11] has argued, theoretically and empirically, against the notion of perfect substitution of public and private health care expenditures. This suggests the inclusion of the proportion of state-financed expenditure as a regressor to investigate whether or not systems with a larger state financing have experienced higher expenditures growth. A pioneer study on the relation between the share of public expenditure in health and spending levels is due to Leu [12]. Our approach gives a panel data structure to the analysis and time (decade) specific effects are added to the econometric specification. The panel data structure of the sample also allows for the introduction of country-specific effects but the small time dimension makes overall estimates reflect essentially cross-country differences, rendering imprecise estimates of the country effects. Therefore, we do not compute country-specific effects.

Since our interest lies in expenditure growth over time, the dependent variables are average growth rates over a decade. Three decades—1960–1970, 1970–1980 and 1980–1990—are considered. The decision to use growth rates over a decade is, of course, open to criticism. There is a clear cost relative to alternatives like year-to-year or 5-year average growth rates: it consumes degrees of freedom. On the other hand, lower-frequency average growth rates have disadvantages of their own. The most important one is that some variables used in the analysis move slowly over time. Decade-wide averages capture broad trends instead of short-term variations, which would become more important sources of varia-

tion if shorter period averages were considered. Computation of the basic model with 5-year average or year-to-year growth rates have the same qualitative results. The interested reader can find these estimates in Appendix B.

Besides growth analysis of health care expenditures, determinants for level differences are also investigated as a check for the data used. In this case, pooled data cover four points in time (1960, 1970, 1980 and 1990). The results are then discussed with reference to existing studies, especially the recent work of Gerdtham *et al.* [1].

## THE DATA

All variables are extracted from the CREDES-OECD database [13]. The data set covers 24 OECD countries, although for longer periods non-availability of information dictates exclusion of some countries in the first two decades.

The set of countries in the sample is constituted by Australia, Austria, Belgium, Canada, Denmark, Finland, France, Germany, Greece, Iceland, Ireland, Italy, Japan, Luxembourg, The Netherlands, New Zealand, Norway, Portugal, Spain, Sweden, Switzerland, Turkey, the UK and the US.

The dependent variable used is per capita health expenditure growth, averaged across a decade. This variable is valued at constant 1990 prices (in national currency units) and converted to the same basis by PPPs at the base year. (The same procedure was followed in Gerdtham *et al.* [1].) An alternative dependent variable would be the average growth of health expenditures over GDP. However, in growth regression equations, the two alternative dependent variables are linked by a simple linear transformation and, therefore, we should expect similar results from the analysis. The growth rate of the share of health care expenditures on GDP is equal to the growth rate of per capita health expenditures minus the growth rate of per capita GDP, which should be included as an explanatory variable (if the dependent variable is per capita health spending). It is thus clear that the empirical specifications are essentially the same when cast in terms of growth rates. Note this is not true for analysis in levels of health care expenditures.

The explanatory variables are constructed as follows:

- To reflect initial conditions, the dependent variable evaluated at its level value in the first year of the period is included. This variable is denoted by  $TE\ per\ capita\_T$  for per capita expenditures;
- A dummy variable controls for the existence of gatekeeping,  $GK$ . It assumes value 1 if the system has gatekeepers, zero otherwise. The countries for which gatekeeping is considered are Austria, Canada, Denmark, Germany, Iceland, Ireland, Italy, The Netherlands, New Zealand, Norway, Portugal, Spain and the UK. The remaining countries are Australia, Belgium, Finland, France, Greece, Japan, Luxembourg, Sweden, Switzerland, Turkey and the US;
- Two dummy variables reflect the system's type:  $PR$  for public reimbursement (Australia, Belgium, France, Italy (up to 1978), Japan, Luxembourg, Switzerland and US) and  $PI$  for integrated (Denmark, Finland, Greece (from 1983), Iceland, Ireland, Italy (from 1979), New Zealand, Norway, Portugal (from 1978), Spain (from 1984), Sweden and the UK). The remaining case is the baseline system, public contract (Austria, Canada, Germany, Greece (up to 1982), The Netherlands, Portugal (up to 1977), Spain (up to 1983) and Turkey). For those countries which recently (last two decades) changed the nature of the system the procedure was to include them in the system to which they belong most of the period. This definition of systems' types follows the characterization of OCDE. It is, of course, open to criticism. Health systems are sufficiently complex and diversity of institutional arrangements sufficiently large to make it impossible to have a simple, manageable, classification that is universally accepted. Instead of engaging in the debate over the proper classification, we opt to use the one of OECD;
- The income variable employed is GDP average growth rate over the period,  $GDPGR$ ;
- ageing of population is measured simply by the change in the percentage of population over 65,  $AGE65$ ;
- Dummies variable for the decades 1970–1980 and 1980–1990, respectively  $D7080$  and  $D8090$ , are also included. Each of the variables takes value 1 if the observation belongs to the decade, zero otherwise. The decade 1960–1970 is taken as the baseline case. This procedure corresponds to fixed time effects.
- The role of state-financed expenditures is proxied by the share of state financing on overall health care expenditures, as in previous work.

Summing up, the equation to be estimated has the linear form

$$\dot{y}_i = \alpha X_i + e_i \quad (1)$$

where  $\dot{y}_i$  denotes growth rate of  $y_i$ ,  $X_i$  denotes the vector of exogenous variables described above and  $e_i$  is an error term following a NID(0,  $\sigma^2$ ) process. Results for a log–log form are essentially the same. For regressions in levels, the double logarithmic form has performed better (Gerdtham *et al.* [4]). Since results do not differ qualitatively from the linear specification, the latter is retained (regressions not shown).

## RESULTS

Table 1 presents the estimated effects of exogenous variables on growth of total health care expenditure (per capita). The first column presents the preferred specification. Substantial experimentation with the model resulted in several simplifications. Individual and joint significance tests were performed using likelihood ratio tests.

From the factors outlined, the dummy variable for the decade 1980–1990 and GDP per capita have a significant impact.

The other significant effect reveals that countries with a higher health care expenditure per capita experienced a lower rate of growth. The introduction of the quadratic term on the initial value of expenditure per capita was dictated by the misspecification tests conducted (see below). The quadratic term allows for a non-linear effect of the starting point of each country, which performs significantly better than a linear approximation. All the other effects are qualitatively unchanged by this term. The effect of the initial level of health care spending is always negative. That is, the higher the health care expenditures per capita the lower is the growth rate in the next decade (holding other factors constant). This suggests the existence of some convergence among countries. The absolute effect is stronger for heavier spenders, although at a decreasing rate. In fact, for the biggest spenders in the sample, the marginal effect is essentially zero (see Table 2). (The minimum occurs for a health expenditure of

Table 1. Results for growth rate equations

	Growth rate of health expenditures per capita				
Constant	7.62 (6.45)	7.61 (6.10)	7.94 (4.93)	5.84 (3.52)	4.51 (4.23)
<i>GDPGR</i>	0.62 (3.69)	0.65 (3.82)	0.65 (3.35)	0.85 (3.73)	0.92 (4.69)
<i>PR</i>			0.24 (0.31)	-0.56 (-0.07)	
<i>PI</i>			-0.04 (-0.01)	-1.62 (-0.22)	
<i>GK</i>			-0.36 (-0.57)	-0.71 (-1.21)	
<i>D8090</i>	-0.89 (-1.86)		-0.51 (-0.49)	-0.92 (-0.01)	
<i>D7080</i>			0.48 (0.57)	-0.09 (0.10)	
<i>AGE65</i>			-0.27 (-1.15)	-0.31 (-1.15)	
<i>PUBFIN</i>			-0.02 (-0.11)	-0.07 (0.39)	
<i>TE per capita<sub>T</sub></i>	-0.096 (-4.34)	-0.102 (-4.65)	-0.099 (-3.75)	-0.033 (-2.80)	-0.035 (-3.51)
<i>(TE per capita<sub>T</sub>)<sup>2</sup></i>	0.037 (2.96)		0.037 (3.24)	0.036 (2.70)	
Adjusted <i>R</i> <sup>2</sup>	0.704	0.710	0.688	0.417	0.627
Number of obs.	65	65	65	65	65

The values shown in parenthesis are *t*-ratios, based on White's robust S.E.s.

1300.) At the highest values in the sample, the relation exhibits already a positive marginal effect. It is, however, rather small (the maximum value is not even a S.E. way from a zero value).

These figures corroborate the inference that a catching-up effect in health care expenditures seems to exist, as countries tend to converge to similar per capita spending levels.

Table 2. The effect of initial conditions

	Marginal effect of initial values	Initial values
Maximum	0.010	1435.000
Minimum	-0.091	53.389
Average	-0.047	664.945
S.D.	0.027	362.958

The negative sign associated with the dummy variable *D8090* shows that in the 1980s a common trend to the OECD countries was a lower growth rate. This may be due to cost-containment efforts, which had some success relative to growth in the previous two decades. OECD [7] describes measures undertaken in a selected sample of OECD countries. Since none of the other proposed explanatory variables turn out to be significant, the slowdown in the growth rate remains largely unexplained. The identification of factors that successfully contributed to a lower growth of health care expenditure should be pursued in future research.

The non-significance of all other variables means that, apparently, the existence of gatekeepers or the type of health system (public reimbursement, public contract or integrated) have played no significant role to contain health expenditure

growth. This finding suggests that the type of health system may have implications for the explanation of the level of health care expenditures across countries, but not on *growth* rates. The main specifications were also estimated separately for each time period. No change in the qualitative inferences has resulted from the exercise.

On the other hand, ageing of population and the relative size of state financing have not contributed to growth of health spending. The first finding runs against common wisdom but it is in line with previous studies, which have found no significant impact of population ageing [9,10].

Another interesting result was that economy's growth, measured by per capita GDP growth, had a significant bearing on health expenditure increases. This suggests an income elasticity lower than but close to unity, which is not far apart from existing estimates.

A final word with respect to the adjusted  $R^2$ . Irrespective of whether the obtained value should be considered high or low, it is worth noting that the unexplained residual amounts to roughly 30%. This is below Newhouse's [2] estimate of a technological progress residual in health care rising costs in the US. Since no control for technology progress was made, we cannot exclude expensive new technology as the main driving force behind health expenditures growth, carrying onto international comparison of health care systems the same consideration that have been put forward by Newhouse for the US. Of course, many other factors may be lying behind this finding. Future research, as better data becomes available, should improve our understanding of the role of technological change. It is not claimed that technology is accountable for the large residual. It is, however, the case that our results do not run against an important role of technology in the growth of health care spending.

The somewhat striking results obtained strongly advises to perform some misspecification tests. The application of the RESET test in the preferred linear specification has led to the inclusion of quadratic terms of exogenous variables. After extensive testing of individual and joint significance, the maintained specification is presented in the first column of Table 1. A description of the tests performed, as well as further information on the results can be found in Appendix A. Essentially, the qualitative results show robustness across specifications, the major difference being

Table 3. Results for level equations

	Health expenditures per capita	
Constant	35.12 (0.32)	63.33 (0.65)
<i>GDP</i>	0.106 (20.19)	0.108 (24.70)
<i>GK</i>	15.45 (0.30)	
<i>PI</i>	-13.00 (-0.24)	
<i>PR</i>	-14.73 (-1.71)	-121.55 (-2.82)
<i>AGE65</i>	4.78 (0.50)	
<i>PUBFIN</i>	-6.38 (-3.75)	-6.18 (-4.75)
Adjusted $R^2$	0.877	0.880
Number of obs.	89	89

The values shown in parenthesis are  $t$ -ratios based on robust S.E.s.

the introduction of a quadratic term on the initial value of health expenditures. Additional tests for non-normality of error terms and exogeneity of GDP growth were also performed, and the null hypothesis was not rejected in either case. Appendix A describes in more detail the procedures and the results of the tests.

To check for consistency of our database with earlier studies, regressions on pooled data for cross-country level differences in health care spending ratio to GDP are presented in Table 3. These regressions are based on variables observed in four points in time: 1960, 1970, 1980 and 1990.

In these regressions no time or country-specific effects were included. The results are in line with previous studies. The most important single explanation factor is GDP. The other significant effect is the public reimbursement dummy. A final joint significance test was performed. The null hypothesis of zero coefficients for all omitted variables is not rejected at the usual significance levels. Its negative sign indicates that countries with a public reimbursement system were able to have a lower fraction of GDP devoted to health care expenditure. No difference was found between the public contract and the integrated system. Unlike the

previous model, no misspecification tests were performed. This is justified by the objective of sticking as close as possible to earlier work on level differences across countries in total per capita health spending.

The result is in contradiction with the earlier study of OECD [14], which has found that public reimbursement systems are more expensive than public contract or integrated systems.

On the other hand, the recent study of Gerdtham *et al.* [1] presents the same qualitative results. Our estimates show that Gerdtham *et al.*'s [1] findings of public reimbursement being the least costly system is robust to larger time-dimension variation. Since variables present in this type of studies evolve slowly over time, the cross-section times-series data for contiguous years tends to reflect essentially the cross-country variation. Our approach of using observations spaced in time (decade) allows time variation to play a bigger role in determining estimates.

In addition, we have the negative effect of public financing of health care services, which was a result already present in Gerdtham *et al.* [1]. The effect results from budgetary pressures on most OECD countries. In fact, public financing of health expenditures as a share of total expenditures has decreased in most countries but so have the weight of public health expenditures on government's budget. (The correlation coefficient between change in public health expenditures as a fraction of total health expenditures and as a fraction of total public expenditure is about 0.6.) This suggests that priority setting at the budget table is probably the explanation for this effect (which does not correspond to a general trend of lower role for the public sector).

As in growth rate analysis, the presence of gatekeepers and ageing of population have no explanatory power of health care expenditures.

Overall, these estimates are qualitatively similar to the ones present in recent studies, suggesting that no significant bias emerges from the database used and that results on growth rates will probably hold in other data sets as well.

## FINAL REMARKS

Making inferences about health care expenditure patterns, based on broad aggregates over coun-

tries and time, is risky, especially if they are not in accordance with received wisdom of previous work. Hence, results should be interpreted carefully.

Using decade-average growth to isolate the analysis from short-run random influences, we found that variables believed to influence health expenditures increases are essentially non-significant.

This is a mix of good news (as it corroborates earlier findings for the effects of ageing population) and bad news (as gatekeepers are usually seen as a way to achieve cost-containment).

We detect, nevertheless, a clear slowdown in health care expenditures (as GDP share) growth in the decade 1980–1990 relative to the average evolution in the two previous decades. The determinants of this slowdown are not identified by our model and the issue clearly calls for further research.

These seemingly 'negative' results are not contradictory with existing analysis of determinants of health care expenditure (in levels). This is true both on empirical and theoretical grounds.

On the empirical side, we performed typical estimations in levels, which gave qualitative results consistent with those of, for example, Gerdtham *et al.* [1].

Combining both types of investigation—level differences and growth rates—we may say that even if some systems were able to sustain a lower spending in health care, increases in expenditures have hit in a roughly similar way all systems (thus preserving the level differences between countries). This also gives a partial justification to why panel data analysis embodying contiguous yearly observations may yield estimates consistent with pure cross-section studies. The analysis is a little more refined than this, as initial position is negatively related to growth. That is, more costly systems tended to grow less. The magnitude of the effect is, however, small.

Finding the determinants of expenditure growth should, therefore, receive more attention from researchers and politicians, as it proved to be no easy matter and do not constitute straightforward extensions of studies on the cross-country variation in the level of health care expenditures.

## ACKNOWLEDGEMENTS

I have benefited from the comments and suggestions of two referees. The usual disclaimer applies.

## APPENDIX A: SPECIFICATION TESTS

*The RESET test*

A simple RESET test was applied to test for misspecification in the functional form. The RESET test assumes that the effect of omitted variables can be proxied by some function of the original regressors. Being the function unknown, a polynomial approximation with coefficients replaced by the estimates obtained under the null model was employed. The equation estimated was:

$$\hat{y} = \alpha X + \sum_{j=2}^4 \beta_j \hat{y}^j + e_i \quad (2)$$

where  $\hat{y}$  denotes the fitted value under the null model. For a more detailed description of the test, see Godfrey [15].

The results of the test are presented in Table 4. The first line of the table presents the variables that were included in each regression. For example, in the third column, only the constant term, the GDP growth rate and the initial value of per capita expenditures were included.

The results show that there is a clear misspecification problem in the regression without the quadratic term in the initial position, while this is no longer true in the other two cases (the likelihood ratio test does not reject the null hypothesis of no misspecification).

Table 4. RESET tests

Variables ( <i>const</i> , <i>GDPGR</i> , $y_{-T}$ )	$y^2_{-T}$ , <i>D9080</i>	$y^2_{-T}$	
	$\beta_j = 0$		
Adjusted $R^2$	0.704275	0.710380	0.626903
Log. likelihood	175.618	174.198	166.999
	$\beta_j \neq 0$		
Adjusted $R^2$	0.707533	0.690770	0.714051
Log. likelihood	177.645	175.268	174.613

Table 5. Exogeneity tests

<i>Const.</i>	8.588 (5.07)	5.034 (2.97)
<i>GDPGR</i>	0.457 (1.73)	0.811 (2.61)
$y_{-T}$	-0.110 (-4.60)	-0.038 (-2.83)
$y^2_{-T}$	0.038 (3.43)	
$z$	0.420 (0.97)	0.248 (0.49)
Adjusted $R^2$	0.696070	0.622504
Log. Likelihood	174.228	167.146

*Test for exogeneity of GDP growth*

From the set of exogenous variables, one may argue that GDP growth is not exogenous. To test for it, a type of 'omitted variables' test was performed. (For the details, see Godfrey [15].) The regression equation was augmented by the residual estimate of the value of GDP growth on a set of instruments. The instruments were GDP level (at the end of previous period), country dummies and health expenditure to GDP at the end of previous period.

As the statistical significance of  $z$  is low (the coefficient is not statistically different from zero), we conclude that the hypothesis of exogeneity is not rejected (Table 5).

*Non-normality tests*

Finally, we also tested for non-normal error terms, using the statistic:

$$n \left( \frac{S^2}{6} + \frac{(k-3)^2}{24} \right) \sim \chi^2_{(2)} \tag{3}$$

APPENDIX B: FURTHER ESTIMATES

where  $S$  is skewness and  $k$  is kurtosis of the residual. The main inference from application of the test to the various regressions is that we do not reject the null hypothesis of normality. For example, for the maintained model,  $S = -0.558$ ,  $k = 3.744$ , the value of the statistic being 4.87, which is below the critical level of the  $\chi^2$  distribution with two degrees of freedom, at the usual 5% significance level (which is 5.99).

The reader may ask how much of the results is dependent on the use of 10-year average growth rates. To cope with that question, Table 6 presents estimates based on 5-year average growth rates. Similarly, Table 7 reports estimates using year-to-year average growth rates. (Data for all countries and periods was not available. The most complete set of data available was used.) In the former case, as we consider a 5-year period, quin-

Table 6. Five-year average growth rate estimates

	Growth rate of health expenditures per capita				
<i>Const.</i>	7.33 (4.29)	6.88 (3.96)	5.33 (2.72)	4.37 (2.53)	4.28 (3.23)
<i>GDPGR</i>	0.68 (2.52)	0.79 (3.03)	0.76 (2.45)	0.88 (2.71)	0.96 (3.57)
<i>PR</i>			0.72 (0.99)	0.61 (0.85)	
<i>PI</i>			0.54 (0.80)	0.66 (0.94)	
<i>GK</i>			-0.13 (-0.22)	-0.33 (-0.58)	
<i>D7065</i>			1.50 (1.27)	1.28 (1.04)	
<i>D7570</i>			2.08 (1.70)	1.75 (1.41)	
<i>D8075</i>			0.004 (0.04)	-0.45 (-0.37)	
<i>D8580</i>	-1.63 (-2.62)		-0.81 (-0.57)	-1.03 (-0.73)	
<i>D9085</i>	-1.09 (-1.75)		-0.29 (-0.21)	-0.44 (-0.32)	
<i>AGE65</i>			-0.18 (-0.43)	-0.11 (-0.25)	
<i>PUBFIN</i>			-0.09 (-0.40)	-0.10 (-0.49)	
<i>TE per capita<sub>T</sub></i>	-0.083 (-3.82)	-0.088 (-3.87)	-0.084 (-3.57)	-0.024 (-3.23)	-0.030 (-3.53)
<i>(TE per capita<sub>T</sub>)<sup>2</sup></i>	0.030 (3.10)	0.030 (3.21)	0.032 (2.75)		
Adjusted $R^2$	0.496	0.481	0.511	0.468	0.441
Number of obs.	125	125	125	125	125

The values shown in parenthesis are  $t$ -ratios, based on White's robust S.E.s.

Table 7. Year-to-year average growth rate estimates

	Growth rate of health expenditures per capita				
<i>Const.</i>	0.09 (6.57)	0.09 (6.30)	0.08 (4.09)	0.08 (4.08)	0.07 (7.09)
<i>GDPGR</i>	0.27 (2.23)	0.33 (2.69)	0.26 (2.14)	0.30 (2.49)	0.39 (3.32)
<i>PR</i>			0.87 (1.49)	0.76 (1.28)	
<i>PI</i>			0.36 (0.60)	0.49 (0.80)	
<i>GK</i>			-0.23 (-0.47)	-0.38 (-0.77)	
<i>D8090</i>	-0.18 (-3.54)		-0.21 (-2.01)	-0.23 (-2.15)	
<i>D7080</i>			-0.03 (-0.37)	-0.07 (-0.76)	
<i>AGE65</i>			-0.24 (-0.02)	0.92 (0.06)	
<i>PUBFIN</i>			0.19 (0.79)	-0.11 (-0.51)	
<i>TE per capita<sub>T</sub></i>	-0.088 (-4.08)	-0.098 (-4.63)	-0.092 (-4.31)	-0.030 (-3.75)	-0.038 (-5.51)
<i>(TE per capita<sub>T</sub>)<sup>2</sup></i>	0.029 (3.83)	0.030 (3.90)	0.031 (3.67)		
Adjusted <i>R</i> <sup>2</sup>	0.164	0.148	0.155	0.151	0.127
Number of obs.	614	614	614	614	614

The values shown in parenthesis are *t*-ratios, based on White's robust S.E.s.

quennial dummy variables were included. Comparison with Table 1 reveals the same qualitative features are common to all sets of estimates.

## REFERENCES

1. Gerdtham, U.-G., Jonsson, B., MacFarlan, M. and Oxley, H. The determinants of health care expenditure in OECD countries: a pooled data analysis. Paper presented at the Third European Congress in Health Economics, Stockholm, August 1995.
2. Newhouse, J. Medical care costs: how much welfare loss? *Journal of Economic Perspectives* 1992; **6**: 3–21.
3. Barro, R. and Sala-i-Martin, X. *Economic Growth*. New York: McGraw-Hill, 1995.
4. Gerdtham, U.-G. Pooling international health care expenditure data. *Health Economics* 1992; **11**: 217–231.
5. Gerdtham, U.-G., Sogaard, J., Jonsson, B. and Andersson, F. A pooled cross-section analysis of the health care expenditures of the OECD countries. In: Zweifel, P. and Frech, II H.E. (eds.) *Health economics worldwide*. Dordrecht: Kluwer Academic Publishers, 1992: 287–310.
7. OECD. The reform of health care systems—a review of seventeen OECD countries. Health Policy Studies No. 5, Paris 1994.
8. McGuire, A., Parkin, D. and Hughes, D. Econometric analyses of national health expenditures: can positive economics answer normative questions? *Health Economics* 1993; **13**: 113–126.
9. Zweifel, P., Felder, S. and Meier, M. Ageing of population and health care expenditure: a red herring? Paper presented at the Third European Congress in Health Economics, Stockholm, August 1995.
10. Zweifel, P. and Ferrari, M. Is there a Sisyphus syndrome in health care? In: Zweifel, P. and Frech,

- II H.E. (eds.) *Health economics worldwide*. Dordrecht: Kluwer Academic Publishers, 1992.
11. Gouveia, M. The public sector and health care: an empirical analysis. Paper presented at the 51st Congress of the International Institute of Public Finance, Lisbon 1995.
  12. Leu, R.E. The public-private mix and international health care costs. In: Culyer, A.J. and Jonsson, B. (eds.) *Public and private health services*. London: Basil Blackwell, 1986.
  13. CREDES-OECD. *OECD health data 1996*. Paris, 1996.
  14. OECD. *The reform of health care: comparative analysis of seven OECD countries*. Health Policy Studies No. 2, Paris 1992.
  15. Godfrey, L.G. *Misspecification tests in econometrics—the Lagrange multiplier principle and other approaches*. Econometric Society Monographs no. 16, Cambridge: Cambridge University Press, 1988.