

UNIVERSIDADE NOVA DE LISBOA

Faculdade de Economia

ISSN 0871-2573

**A MULTICRITERIA APPLICATION ON THE
PLANNING OF EDUCATIONAL FACILITIES**

J. D. COELHO

Working Paper Nº 153

UNIVERSIDADE NOVA DE LISBOA
Faculdade de Economia
Trav. de Estevão Pinto - Campolide
1000 LISBOA
PORTUGAL

Junho , 1990

**A MULTICRITERIA APPLICATION
ON THE PLANNING OF EDUCATIONAL FACILITIES**

J. D. COELHO

Working Paper Nº 153

Faculdade de Economia
Universidade Nova de Lisboa
Tv. Estevão Pinto, Campolide

1000 LISBOA, PORTUGAL

ABSTRACT

A multicriteria approach has been used to build a composite index of 'lack' of educational facilities for every municipality in Portugal. The data has been extracted from a relational database containing a wide range of information on educational facilities, students and teachers.

In the paper the structure of the index, the aggregation method and the application on the planning of educational facilities in Portugal are presented.

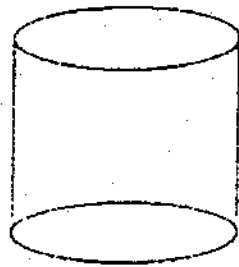
1. Introduction

A developing country such as Portugal has always some sort of lack of educational facilities. The demand for schools resulting from the pressure of economic development cannot be fully satisfied with the available budget, either through the building of new facilities or through the upgrading of existing ones. Thus, the problem naturally arises of allocating resources for those areas of the most urgent need.

The Planning Bureau of the Ministry of Education (GEPME) that is in charge of making recommendations regarding the development of educational facilities, has given the author the task of evaluating the lack of educational facilities in each of the over three hundred municipalities that make up the country. A relational database including very rich disaggregated data was available (COELHO, 1989).

As a first step towards the goal mentioned above, a number of variables resident in the GEPME database denoting lack of adequate educational facilities have been identified. This has produced one hundred and twenty five diverse variables, such as the number of primary schools with two classes and one class-room and the percentage of secondary schools without a gymnasium.

The second step was to cluster those variables and aggregate them in order to produce a set of indices denoting specific needs and, finally, an overall index associated with each municipality (see Fig. 1). This procedure will be explained in the next section.



DATABASE

VARIABLES



Variables denoting lack of adequate educational facilities (125)

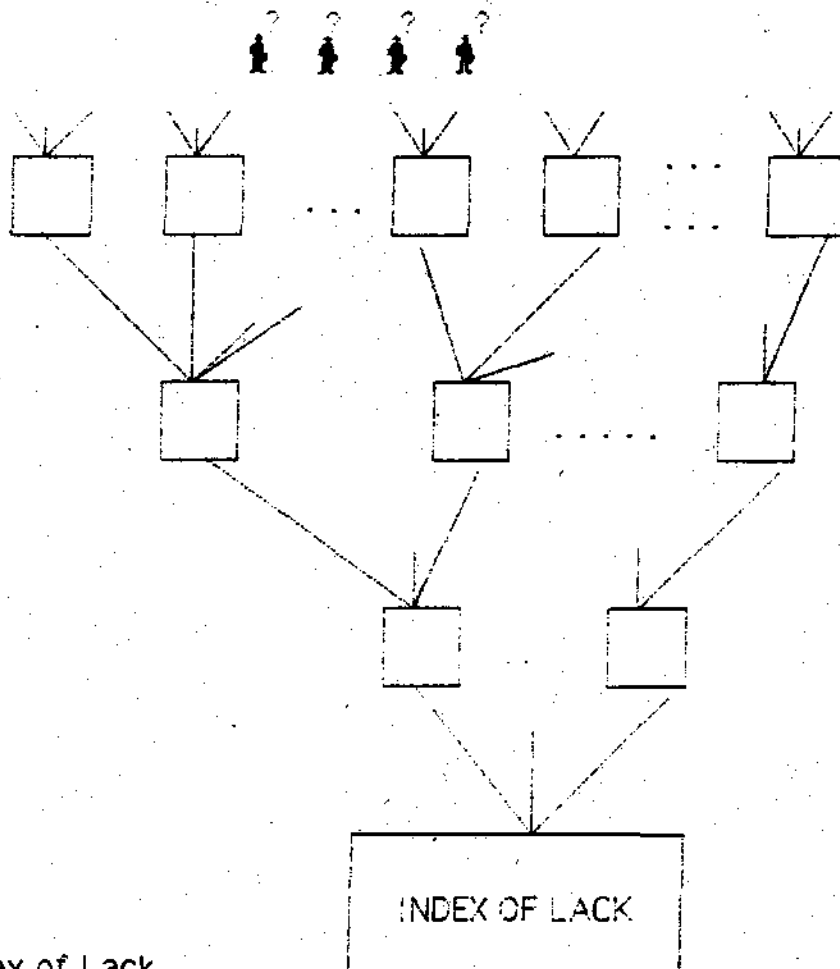


Fig. 1 - The Index of Lack

2. The Index of Lack of Educational Facilities

The index is evaluated by combining a procedure that operates over the database and a module for weights evaluation developed through the analytical hierarchy method (Saaty, 1986).

In this last method, the set of criteria, objectives or, in this case, elementary and aggregated indices is structured and hierarchized as a tree. The weights associated with the criteria in the higher levels of the hierarchy are obtained from the levels below by weighted averages. In accordance with the simple additive weighting approach, a value is associated with each alternative (municipality)

$$\sum_j w_j x_{ij}$$

where x_{ij} is the evaluation of alternative i by criterion j and w_j is a normalized weight for that criterion.

By noting that criteria often have different levels of importance and that comparing criteria in those circumstances may be very difficult and that it becomes even more cumbersome if the number of criteria increases, Saaty (1986) has proposed a hierarchical tree structure for the set of criteria (see figure 2).

The weights are evaluated through comparisons done in each level of the hierarchical tree structure. The aggregation is accomplished by sequential aggregations along the tree. With the notation of figure 2, we have

$$w = B_1 B_2 \dots B_p x$$

where w is the vector of global weights and B_k is a diagonal matrix with the local weights at level k and $X=[X_{ij}]$ is the evaluation matrix. The weights B_k ($k=1, \dots, p$) and x are easily determined using the software Expert Choice, which implements the Saaty method.

In this case, x_{ij} is the elementary index j for municipality i . This information is drawn from the education database following the selection of variables denoting lack of adequate educational facilities that have been identified.

Taking into account the size of this application, we have developed a number of computer modules that perform the following steps:

- IC-WEIGHTS - for loading the weight determined through Expert Choice into the database.
- IC-RETRIEVE - for retrieving from the GEPME database the information identified, making any required processing according with the definition of the elementary index and transferring the output into a new table in the database.
- IC-NORMALIZE- for normalizing the elementary indices.
- IC-EVALUATE - for evaluating the aggregate indices of the hierarchical tree structure. The aggregate indices at all levels of the tree are an output of this procedure. They are loaded into the table mentioned above.
- IC-LIST - for listing the indices, both elementary and aggregate, following options selected by the user.

A parallel structure has been developed to allow for focusing the index evaluation on any pre-specified region. This was quite relevant for our customer, since its planning activities are often confined to particular regions (see, for examples, [2]).

Thus, we have developed the following additional procedures

- IC-INPUT-ZONES for defining the region and transferring to another table the information already processed by IC-RETRIEVE, referring to that particular region.
- IC-NORMALIZE-ZONES for normalizing that information within the specified region.
- IC-EVALUATE-ZONES for evaluating local indices.

IC-LIST-ZONES the same function of IC-LIST for the region.

This set of procedures allows us to obtain the set of indices of lack of educational facilities with any pre-specified regional disaggregation.

3. STRUCTURE OF THE INDEX AND OUTPUTS

The first level of the structure of the index of lack of educational facilities is depicted in Fig. 3 (the meaning of the variables represented in this and subsequent figures is given in the glossary of terms, Annex 1).

The components BASIC01, BASIC02, BASIC03 and SECUND are themselves indices of lack of educational facilities, in primary, elementary, junior high school and senior high school, respectively (see figures 4 to 7). The future demand for educational facilities is taken into account through DEMOGRAF. A more detailed structure including local and global weights is provided in Annex 2. Again, the terms used have the definitions set down in the glossary of terms.

These indices have been used in a study for the Algarve region. The overall values for the index of lack of educational facilities are shown in Figure 8. Some specific outputs are presented in Figures 9 and 10. In Figure 9, the overall index, denoted 00000, and the first level indices, represented by 10000, 20000, 30000, 40000 and 50000 are given, with the municipalities listed, by ascending order of the overall index. In Figure 10, we have again the overall index, the index associated with elementary schools (20000), and four indices in the level immediately below this last one. It is now clear that for the purpose of output a lexicographic ordering has been adopted, with the digits from left to right denoting the position of the variable in the hierarchical tree structure. In this ordering, the symbol 00000 denotes the root of the tree, the first digit provides the position in the first level, the second digit in the second level and so on.

The user specifies the variables for each output table and selects the column for ascending or descending ordering of the municipalities, having no limitations in the configuration of variables selected for print out, besides the root 00000 that is always included.

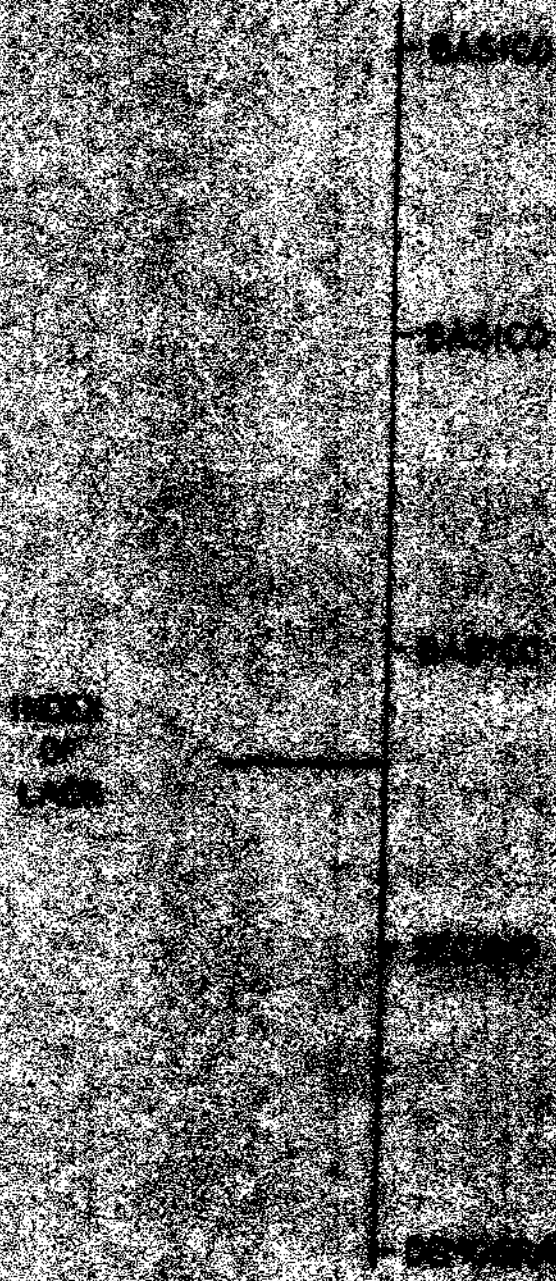


Fig. 3 - First level of the hierarchy

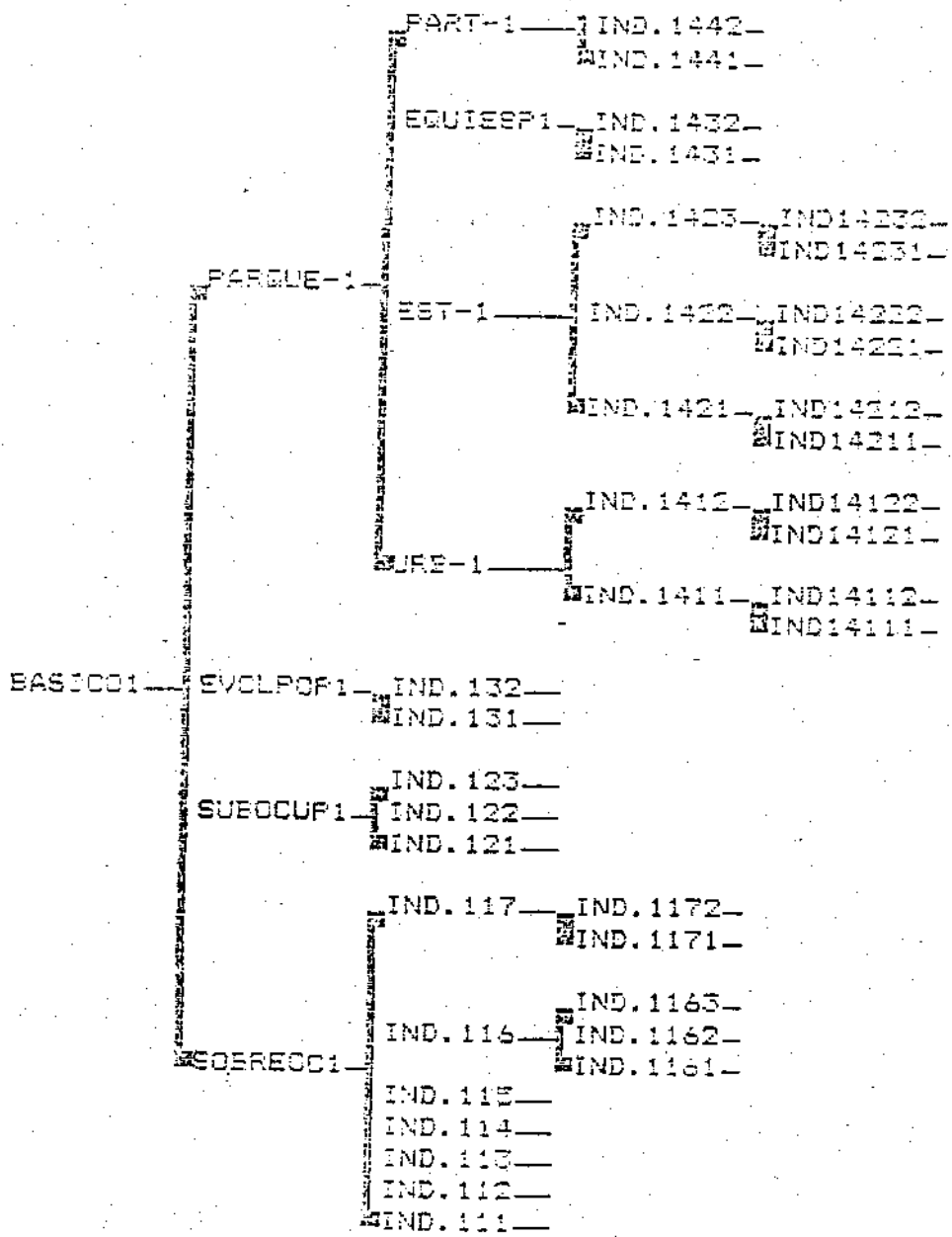


Fig. 4 - Index Structure for BASIC01

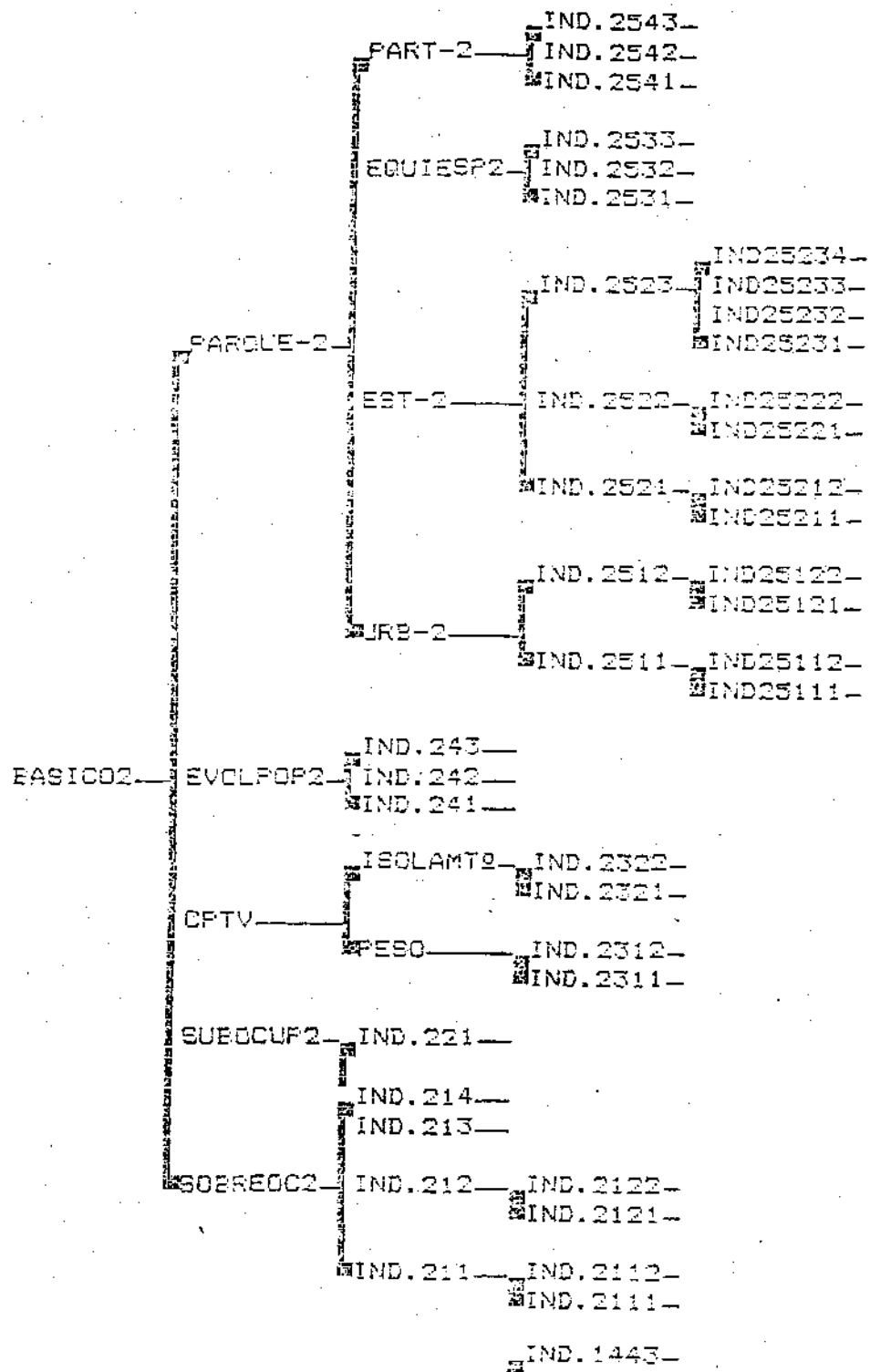


Fig. 5 - Index Structure for BASIC02

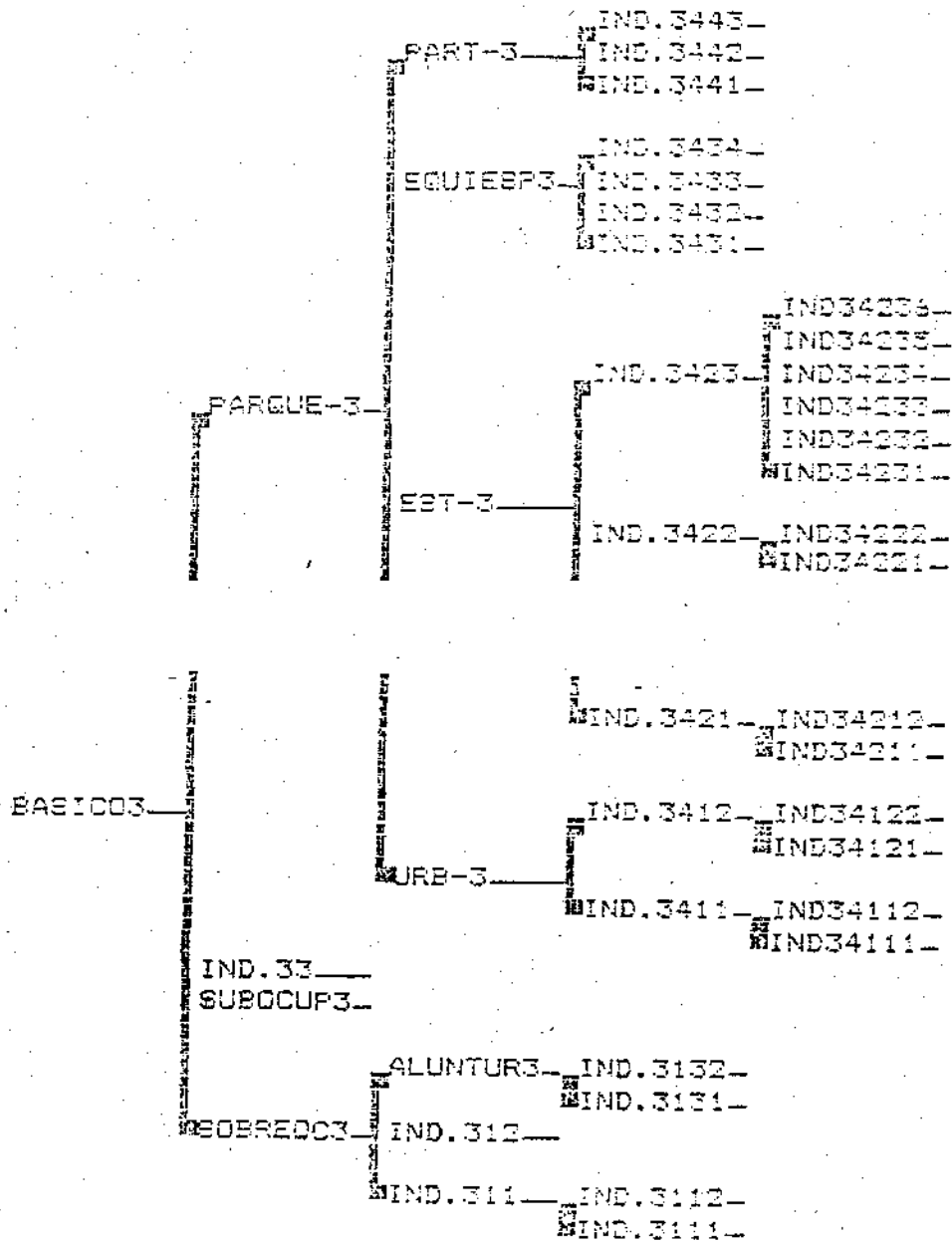


Fig. 6 - Index Structure for BASIC03

index of lack of educational facilities

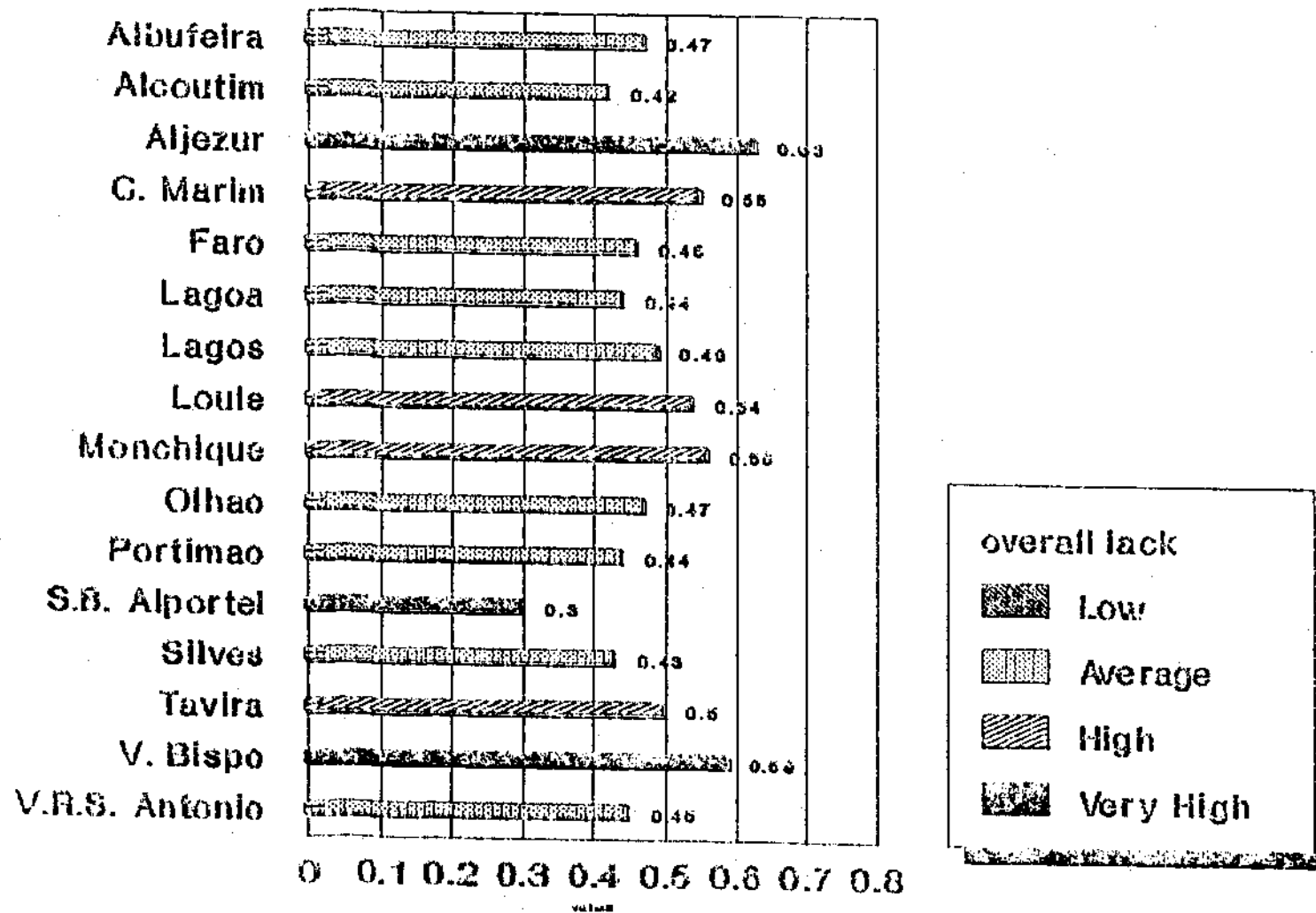


Fig. 8

Indicadores de Carença do Sistema Educativo

Gabinete de Estudos e Planeamento do Ministério da Educação
Base de Dados da Educação

Faculdade de Economia da Universidade Nova de Lisboa

	00000 (valor normalizado)	10000	20000	30000	40000	50000
00000 (valor normalizado)						
10000 (valor normalizado)	0.296754	0.275434	0.291667	0.416667	0.500000	0.000000
20000 (valor normalizado)	0.422917	0.390612	0.428289	0.571521	0.000000	0.301245
30000 (valor normalizado)	0.433906	0.382416	0.452564	0.550505	0.354167	0.429679
40000 (valor normalizado)	0.443036	0.354648	0.269329	0.504377	0.500000	0.561326
50000 (valor normalizado)	0.473008	0.377567	0.446980	0.480203	0.630208	0.260033
Alcoentim	0.451309	0.330641	0.371048	0.528607	0.623346	0.402905
Aljezur	0.458995	0.422237	0.457320	0.523272	0.625000	0.265145
Algarve	0.466200	0.356972	0.616176	0.311170	0.639215	0.407469
Alentejo	0.473154	0.403492	0.533916	0.518272	0.531250	0.378836
Alentejo Al	0.491835	0.456521	0.359436	0.660235	0.587129	0.395551
Alentejo C	0.504133	0.415225	0.623316	0.518162	0.580976	0.382980
Alentejo S	0.535908	0.435181	0.618366	0.556376	0.677083	0.392531
Alentejo T	0.553391	0.469941	0.655656	0.000000	0.500000	0.567967
Alentejo V	0.562659	0.321927	0.592770	0.502330	0.500000	0.596266
Alentejo W	0.594574	0.253156	0.790699	0.000000	0.500000	0.634440
Alentejo X	0.625307	0.521210	0.460017	0.060000	0.500000	1.000000
Alentejo Y						
Alentejo Z						
Alentejo AA						
Alentejo AB						
Alentejo AC						
Alentejo AD						
Alentejo AE						
Alentejo AF						
Alentejo AG						
Alentejo AH						
Alentejo AI						
Alentejo AJ						
Alentejo AK						
Alentejo AL						
Alentejo AM						
Alentejo AN						
Alentejo AO						
Alentejo AP						
Alentejo AQ						
Alentejo AR						
Alentejo AS						
Alentejo AT						
Alentejo AU						
Alentejo AV						
Alentejo AW						
Alentejo AX						
Alentejo AY						
Alentejo AZ						
Alentejo BA						
Alentejo BB						
Alentejo BC						
Alentejo BD						
Alentejo BE						
Alentejo BF						
Alentejo BG						
Alentejo BH						
Alentejo BI						
Alentejo BJ						
Alentejo BK						
Alentejo BL						
Alentejo BM						
Alentejo BN						
Alentejo BO						
Alentejo BP						
Alentejo BQ						
Alentejo BR						
Alentejo BS						
Alentejo BT						
Alentejo BU						
Alentejo BV						
Alentejo BW						
Alentejo BX						
Alentejo BY						
Alentejo BZ						
Alentejo CA						
Alentejo CB						
Alentejo CC						
Alentejo CD						
Alentejo CE						
Alentejo CF						
Alentejo CG						
Alentejo CH						
Alentejo CI						
Alentejo CJ						
Alentejo CK						
Alentejo CL						
Alentejo CM						
Alentejo CN						
Alentejo CO						
Alentejo CP						
Alentejo CQ						
Alentejo CR						
Alentejo CS						
Alentejo CT						
Alentejo CU						
Alentejo CV						
Alentejo CW						
Alentejo CX						
Alentejo CY						
Alentejo CZ						
Alentejo DA						
Alentejo DB						
Alentejo DC						
Alentejo DD						
Alentejo DE						
Alentejo DF						
Alentejo DG						
Alentejo DH						
Alentejo DI						
Alentejo DJ						
Alentejo DK						
Alentejo DL						
Alentejo DM						
Alentejo DN						
Alentejo DO						
Alentejo DP						
Alentejo DQ						
Alentejo DR						
Alentejo DS						
Alentejo DT						
Alentejo DU						
Alentejo DV						
Alentejo DW						
Alentejo DX						
Alentejo DY						
Alentejo DZ						
Alentejo EA						
Alentejo EB						
Alentejo EC						
Alentejo ED						
Alentejo EE						
Alentejo EF						
Alentejo EG						
Alentejo EH						
Alentejo EI						
Alentejo EJ						
Alentejo EK						
Alentejo EL						
Alentejo EM						
Alentejo EN						
Alentejo EO						
Alentejo EP						
Alentejo EQ						
Alentejo ER						
Alentejo ES						
Alentejo ET						
Alentejo EU						
Alentejo EV						
Alentejo EW						
Alentejo EX						
Alentejo EY						
Alentejo EZ						
Alentejo FA						
Alentejo FB						
Alentejo FC						
Alentejo FD						
Alentejo FE						
Alentejo FF						
Alentejo FG						
Alentejo FH						
Alentejo FI						
Alentejo FJ						
Alentejo FK						
Alentejo FL						
Alentejo FM						
Alentejo FN						
Alentejo FO						
Alentejo FP						
Alentejo FQ						
Alentejo FR						
Alentejo FS						
Alentejo FT						
Alentejo FU						
Alentejo FV						
Alentejo FW						
Alentejo FX						
Alentejo FY						
Alentejo FZ						
Alentejo GA						
Alentejo GB						
Alentejo GC						
Alentejo GD						
Alentejo GE						
Alentejo GF						
Alentejo GG						
Alentejo GH						
Alentejo GI						
Alentejo GJ						
Alentejo GK						
Alentejo GL						
Alentejo GM						
Alentejo GN						
Alentejo GO						
Alentejo GP						
Alentejo GQ						
Alentejo GR						
Alentejo GS						
Alentejo GT						
Alentejo GU						
Alentejo GV						
Alentejo GW						
Alentejo GX						
Alentejo GY						
Alentejo GZ						
Alentejo HA						
Alentejo HB						
Alentejo HC						
Alentejo HD						
Alentejo HE						
Alentejo HF						
Alentejo HG						
Alentejo HH						
Alentejo HI						
Alentejo HJ						
Alentejo HK						
Alentejo HL						
Alentejo HM						
Alentejo HN						
Alentejo HO						
Alentejo HP						
Alentejo HQ						
Alentejo HR						
Alentejo HS						
Alentejo HT						
Alentejo HU						
Alentejo HV						
Alentejo HW						
Alentejo HX						
Alentejo HY						
Alentejo HZ						
Alentejo IA						
Alentejo IB						
Alentejo IC						
Alentejo ID						
Alentejo IE						
Alentejo IF						
Alentejo IG						
Alentejo IH						
Alentejo II						
Alentejo IJ						
Alentejo IK						
Alentejo IL</						

ACKNOWLEDGEMENTS

The author is grateful to Carmo Matos, Lisete Frias, Lurdes Parente, Luís Nunes and Rui Monteiro for their help in setting up this project. Special thanks are due to the Gabinete de Estudos e Planeamento do Ministério da Educação and the Junta Nacional de Investigação Científica e Tecnológica (Project 37/23) for financial support.

REFERENCES

- [1] COELHO, J.D. (1989) "Optimal Location of School Facilities",
in "Operational Research and the Social Sciences",
M.C. Jackson, P. Keys and S.R. Cropper (eds),
Plenum Press, pp 275-284
- [2] FEUNL (1989) "Base de Dados de Educação - Estudo de Micro-
planeamento: Região do Algarve", Vol. (XV),
Faculdade de Economia, Universidade Nova de Lisboa
- [3] SARTY, T. (1986) "Decision Making for Leaders - The Analyti-
cal Hierarchy Process for Decisions in a Complex
World",
University of Pittsburgh

GOAL : Index of Lack

Glossary of Terms Used in Model

- GOAL - Index of Lack
- ALUNTUR3 - Perc.Stud.Junior High School Primary School, average n° pupils/Class >25
- ALUNTURS - Perc.Stud.Elementary School, average n° pupils/Class >25
- ABSENCE - Absence of Elementary School
- BASIC01 - Lack of Infrastructures in Primary Schools
- BASIC02 - Lack of Infrastructures in Elementary Schools
- BASIC03 - Lack of Infrastructures in Junior High Schools
- CPTU - Indirect Elementary School
- DEMOGRAF - Demographic growth
- EQUIESP1 - Index of Lack of Specific Facilities in Prim. Schools
- EQUIESP2 - Index of Lack of Specific Facilities in Elem. Schools
- EQUIESP3 - Index of Lack of Specific Facilities in Junior High Schools
- EQUIESPS - Index of Lack of Specific Facilities in Senior High Schools
- EST-1 - Index of Building Stock Quality in Prim. Schools
- EST-2 - Index of Building Stock Quality in Elem. Schools
- EST-3 - Index of Building Stock Quality in Junior High Schools
- EST-6 - Index of Building Stock Quality in Senior High Schools
- EVOLPOP1 - Evolution of School Population in Primary Schools
- EVOLPOP2 - Evolution of School Population in Elementary Schools
- IND.111 - Proportion of Prim. Schools with 2 Classes and 1 Room
- IND.112 - Proportion of Prim. Schools with 3 Classes and 1 Room
- IND.113 - Proportion of Prim. Schools with 3 Classes and 2 Rooms
- IND.114 - Proportion of Prim. Schools with 4 Classes and 2 Rooms
- IND.115 - Proportion of Prim. Schools with 4 Classes and 3 Rooms
- IND.116 - Proport.of Prim. Schools with n° Classes >n° Rooms and >4
- IND.1161 - Classes/Rooms <2
- IND.1162 - Classes/Rooms = 2
- IND.1163 - Classes/Rooms > 2
- IND.117 - Proport. Prim.Schools with(School Pop./N° Rooms) >24
- IND.1171 - Prop.Prim. Schools with (Sch.Pop./N° Rooms)>24 and <31
- IND.1172 - Prop.Prim.Schools with (Sch.Pop./N° Rooms) >30
- IND.121 - Proportion Primary Schools with 10 or less pupils

- IND.122 - Proport.Prim. Schools having between 11 and 15 pupils
- IND.123 - Prop. Prim. Schools with School Pop./No Rooms <18
- IND.131 - Growth Rate of Sch.Pop.in Primary Sch. between 1982-87
- IND.132 - Projection of the Growth Rate of Primary Schools 1987-1995
- IND.1411 - Index of Lack of Location adequacy in Primary School
- IND.1412 - Index of Lack of Salubrity in Primary School
- IND.1421 - Percent.of Covered Area of Prim.Sch. in Bad Condition
- IND.1422 - Index of Scarcity of uncovered Area in Primary School
- IND.1423 - Percentage of Inadequate Classrooms in Primary School
- IND.1431 - Percentage of Buildings with no canteen in Primary Sch
- IND.1432 - Percent.of Buildings without playfields in Primary Sch
- IND.1441 - Percentage of School Facilities whose Buildings are shared with preschool
- IND.1442 - Percentage of School Buildings whose Buildings are shared with the Elementary School
- IND.1443 - Percentage of School Buildings whose Buildings are shared with preschool and Elementary School
- IND.211 - Percentage of Elementary School Facilities with an Enrolment Rate over 100% (Tip.)
- IND.2111 - Perc. Elementary School Facilities with Enrolment Rate > 100% and >151% (Tip.)
- IND.2112 - Perc. Element.School Facil.with Enrol.Rate >150%(Tip.)
- IND.212 - Perc.Element.School Facil.with Enrol.Rate over 100% (Cap.F.)
- IND.2121 - Perc. Element.School Facil.with Enrol.Rate >100% and <151% (Cap.F.)
- IND.2122 - Perc.Element.School Facil.with Enrol.Rate>150%(Cap.F.)
- IND.213 - Perc.Element.School Population,1st year,with average number Pupil/Class over 25
- IND.214 - Perc.Element.School Population,2nd year,with average number Pupil/Class over 25
- IND.221 - Index of under-enrolment of Element.School Facilities
- IND.2311 - Percentage of Elementary School Pupils in CPTU
- IND.2312 - Percent.of CPTU Sch.Facilities in Elementary School
- IND.2321 - Perc.of CPTU Sch.Facilities farther than 5km from nearest Elementary School Facility
- IND.241 - Growth Rate of Elementary School Popul. in 1983-1987
- IND.242 - Projection of Element. School Popul.Growth in 1987-95
- IND.243 - Ratio of Entries in Primary Schools 1987 Cap. Tipol. Direct Elementary Schools

- IND.2511 - Index of Lack of Location adequacy in Elementary Schools
- IND.2512 - Index of Lack of Salubrity in Elementary Schools
- IND.2521 - Perc. of Element.School Covered Area in Bad Condition
- IND.2522 - Index of Scarcity of Element.School uncovered Area
- IND.2523 - Percent.of Element.School Inadequate Classrooms
- IND.2531 - Percent.of Buildings without Canteen in Elem.Schools
- IND.2532 - Percent.of Buildings without Gymnasium in Elem.Schools
- IND.2533 - Perc.of Buildings without Playfields in Elem Schools
- IND.2541 - Perc.of School Facilities whose Buildings are shared with Junior High Schools
- IND.2542 - Perc.of School Facilities whose Buildings are shared with High School
- IND.2543 - Perc.of School Facilities whose Buildings are shared with Junior High School and High School
- IND.311 - Percent.of Junior High School Population with Enrollment Rate over 100% (Tip.)
- IND.3111 - Enrollment Rate between 100 and 150
- IND.3112 - Enrollment Rate over 150
- IND.312 - Growth Rate of Junior High School Popul.in 1983-87.
- IND.3131 - between 25 and 30
- IND.3132 - over 30
- IND.33 - Projection of Junior High School Popul.,1987-1995.
- IND.3411 - Index of Lack of Location adeq. in Junior High School
- IND.3412 - Index of Lack of Salubrity in Junior High School
- IND.3421 - Perc.of Junior High School Covered Area in Bad Condition
- IND.3422 - Index of Scarcity of Junior High School Uncovered Area
- IND.3423 - Perc. of Junior High School Inadequate Classrooms
- IND.3431 - Perc.of Build. without Canteen in Junior High Schools
- IND.3432 - Perc.of Build. without Gymnasium in Junior High School
- IND.3433 - Perc.of Buildings without Playfields in Junior High Schools
- IND.3434 - Perc.of Prim. Schools without workshops and similar in Junior High Schools
- IND.3441 - Perc.of Primary Schools whose Buildings are shared with Elementary Schools
- IND.3442 - Perc.of Primary Schools whose Buildings are shared with Senior High Schools
- IND.3443 - Perc.of Prim. Schools whose Buildings are shared with Elementary and Junior High School
- IND.411 - Absence of Infrastructures still teaching in Senior High Schools

- IND.412 - Absence of Infrastructures and no teaching in Senior High Schools
- IND.413 - Functioning of Senior High School without last grade
- IND.421 - Perc. of Senior High School with Enrolment Rate over 100% (Tip.)
- IND.4211 - between 100 and 150
- IND.4212 - over 150
- IND.422 - Perc. of Senior School Pop. in School Facilities with Enrolment Rate over 100% (Tip.)
- IND.4221 - between 100 and 150
- IND.4222 - over 150
- IND.4231 - Perc. of High School Popul. 1st Grade, with Pupils/Class >25
- IND.4232 - Perc. of Senior High Sch. Pop. 2nd Grade with Pupils/Class >25
- IND.4233 - Perc. of Senior High School Pop. 3rd Grade with Pupils/Class >25
- IND.4311 - Index of Lack of Location adequacy in Senior High Sch.
- IND.4312 - Index of Lack of Salubrity in Senior High School
- IND.4321 - Perc. of Senior High School covered Area in Bad Condit
- IND.4322 - Index of Scarcity of Senior High School uncovered Area
- IND.4323 - Perc. of Senior High School Inadequate Classrooms
- IND.4331 - Perc. of Senior High School Buildings without Canteen
- IND.4332 - Perc. of Senior High School Buildings without Gymnasium
- IND.4333 - Perc. of Senior High School Build. without Playfields
- IND.4334 - Perc. of Senior High Sch. Facil. without workshops and similar
- IND.4341 - Perc. of Primary Schools whose Buildings are shared with Junior High Schools
- IND.4342 - Perc. of Primary Schools whose Buildings are shared with Junior High Schools and Elementary Schools
- IND.441 - Under-enrolment in Junior High School - 1st Grade
- IND.442 - Under-Enrolment in Junior High School - 2nd Grade
- IND.443 - Under-enrolment in Junior High School - 3rd Grade
- IND.51 - Population Growth Rate 1981-1985
- IND.52 - Growth Rate of New Electors 1979-1986
- IND14111 - Primary School Location: Bad/Very Bad
- IND14112 - Primary School Location: fair
- IND14211 - Perc. of Prim. Sch. covered Area in ruins/Inrecoverable
- IND14212 - Perc. of Primary School covered Area in Bad Condition
- IND14221 - Perc. of School Facil. with uncovered Area/Pupils <1

- IND14222 - Perc.of School Facilities with uncovered Area/pupils between 1 and 5
- IND14231 - Classrooms with an area smaller than 30 M2
- IND14232 - Classrooms with an area between 30 and 47 M2
- IND25111 - Elementary School Location: Bad/Very Bad
- IND25112 - Elementary School Location: fair
- IND25121 - Elementary School Salubrity: Bad/Very Bad
- IND25122 - Elementary School Salubrity: fair
- IND25211 - Perc.of Elem.Sch. covered Area in Ruins/irrecoverable
- IND25212 - Perc. of Element. School covered Area in Bad Condition
- IND25221 - Perc.of Elem. School with uncovered area/pupils <1
- IND25222 - Perc.of Elem. School with uncovered area/between 1 and 5 pupils
- IND25231 - Normal Classrooms with area < 30 M2
- IND25232 - Special Classrooms with area < 35 M2
- IND25233 - Normal Classrooms with area between 30 and 47 M2
- IND25234 - Special Classrooms with area between 35 and 54 M2
- IND34111 - Location of Junior High School: Bad/Very Bad
- IND34112 - Location of Junior High School: fair
- IND34121 - Salubrity in Junior High School: Bad/Very Bad
- IND34122 - Salubrity in Junior High School: fair
- IND34211 - Perc.of Junior High School covered area in Ruins/irrecoverable
- IND34212 - Perc.of Junior High School covered are in Bad Condit.
- IND34221 - Perc.of Junior High School with uncovered area/pupils <1
- IND34222 - Perc.of Junior High School with uncovered area/between 1 and 5 pupils
- IND34231 - Normal Classrooms with area < 30 M2
- IND34232 - Special Classrooms with area < 35 M2
- IND34233 - Workshop Classrooms and similar with area < 70 M2
- IND34234 - Normal Classrooms with area between 30 and 47 M2
- IND34235 - Special Classrooms with area between 35 and 54 M2
- IND34236 - Workshop Classrooms and similar with area between 70 and 99 M2
- IND43111 - Location of Senior High School: Bad/Very Bad
- IND43112 - Location of Senior High School: fair
- IND43121 - Salubrity in Senior High School: Bad/Very Bad
- IND43122 - Salubrity in Senior High School: fair
- IND43211 - Perc.of Senior High School covered area in Ruins/irrecoverable
- IND43212 - Perc.of Senior High School covered area in Bad Condit.

- IND43221 - Perc.of School Facilit. with uncovered area/pupils <1
- IND43222 - Perc.of Scholl Facilities with uncovered area/between 1 and 5 pupils
- IND43231 - Normal Classrooms with area < 30 M2
- IND43232 - Special Classrooms with area < 35 M2
- IND43233 - Workshop Classrooms and similar with area < 70 M2
- IND43234 - Normal Classrooms with area between 30 and 47 M2
- IND43235 - Special Classrooms with area between 35 and 54 M2
- IND43236 - Workshop Classrooms and similar with area between 70 and 99 M2
- ISOLAMT2 - Isolation of CPTU School Facilities
- PAAQUE-1 - Condition of Primary School Building Stock
- PAAQUE-2 - Condition of Elementary School Building Stock
- PAAQUE-3 - Condition of Junior School Building Stock
- PAAQUE-S - Condition of Senior High School Building Stock
- PART-1 - Index of share of buildings with other school grades
- PART-2 - Index of share of buildings with other school grades
- PART-3 - Index of share of buildings with other school grades
- PART-S - Index of share of buildings with other school grades
- PESO - Proportion of CPTU teaching in Elementary School
- SECUND - Lack of Infrastructures in Elementary School
- SOBREOC1 - Over-enrolment of Infrastructures in Primary School
- SOBREOC2 - Over-enrolment of Infrastructures in Elementary School
- SOBREOC3 - Over-enrolment of Infrastructures in Junior High Sch.
- SOBRECPS - Over-enrolment of Infrastructures in Senior High Sch.
- SUBOCP1 - Under-enrolment of Infrastructures in Primary School
- SUBOCP2 - Under-enrolment of Infrastructures in Element. School
- SUBOCP3 - Under-enrolment of Infrastructures
- SUBOCUPS - Index of under-enrolment in Senior High School-Perc.of classes with less than 15 pupils
- URB-1 - Index of Lack of Urbanization Quality in Prim. School
- URB-2 - Index of Lack of Urbanization Quality in Elem. School
- URB-3 - Index of Lack of Urbanization Quality in Junior High School
- URB-S - Index of Lack of Urbanization Quality in Senior High School

Indicador de Carência

GOAL
G 1.000

BASIC01	BASIC02	BASIC03	SECUND	DEMOGRAF
G 0.515	G 0.205	G 0.185	G 0.047	G 0.048
!-SOBREOC1	!-SOBREOC2	!-SOBREOC3	!-AUSENCIA	!-IND.51
G 0.115	G 0.030	G 0.033	G 0.018	G 0.024
!-SUBOCUP1	!-SUBOCUP2	!-SUBOCUP3	!-SOBROCF5	!-IND.52
G 0.036	G 0.014	G 0.015	G 0.007	G 0.024
!-EVOLPOP1	!-CPTV	!-IND.33	!-PARQUE-S	
G 0.291	G 0.069	G 0.073	G 0.018	
!-PARQUE-1	!-EVOLPOP2	!-PARQUE-3	!-SUBOCUP5	
G 0.073	G 0.045	G 0.064	G 0.004	
	!-PARQUE-2			
	G 0.047			

- GOAL --- Indicador de Carência
- AUSENCIA --- Ausência de Secundário
- BASIC01 --- Carência de Infra-estruturas do Ensino Básico - 1º Ciclo
- BASIC02 --- Carência de Infra-estruturas do Ensino Básico - 2º Ciclo
- BASIC03 --- Carência de Infra-estruturas do Ensino Básico - 3º Ciclo
- CPTV --- Ensino Preparatório Indirecto
- DEMOGRAF --- Crescimento Demográfico
- EVOLPOP1 --- Evolução da População Escolar do Ensino Básico - 1º Ciclo
- EVOLPOP2 --- Evolução da População Escolar do Ensino Básico - 2º Ciclo
- IND.33 --- Projectão do Crescimento da Pop. Ens. Bás. - 3º Ciclo, 1987-199
- IND.51 --- Taxa de Crescimento Populacional 1981-1985
- IND.52 --- Taxa de Crescimento de Novos Eleitores 1979-1986
- PARQUE-1 --- Estado do Parque Escolar do Ensino Básico - 1º Ciclo
- PARQUE-2 --- Estado do Parque Escolar do Ensino Básico - 2º Ciclo
- PARQUE-3 --- Estado do Parque Escolar do Ensino Básico - 3º Ciclo
- PARQUE-S --- Estado do Parque Escolar do Ensino Secundário
- SECUND --- Carência de Infra-estruturas do Ensino Secundário
- SOBREOC1 --- Sobre-ocupação de Infraestruturas do Ensino Básico - 1º Ciclo
- SOBREOC2 --- Sobre-ocupação de Infraestruturas do Ensino Básico - 2º Ciclo
- SOBREOC3 --- Sobre-ocupação de Infraestruturas do Ensino Básico - 3º Ciclo
- SOBROCF5 --- Sobre-ocupação de Infraestruturas do Ensino Secundário
- SUBOCUP1 --- Sub-ocupação de Infraestruturas do Ensino Básico - 1º Ciclo
- SUBOCUP2 --- Sub-ocupação de Infraestruturas do Ensino Básico - 2º Ciclo
- SUBOCUP3 --- Sub-ocupação de Infra-estruturas
- SUBOCUP5 --- Índice de sub-ocupação no Sec. = Perc. turmas com menos de 18 alu
- G --- GLOBAL PRIORITY: PRIORITY RELATIVE TO GOAL

Indicador de Carência

! GOAL !
! L 1.000 !

BASIC01	BASIC02	BASIC03	SECUND	DEMOGRAF
L 0.515	L 0.205	L 0.185	L 0.047	L 0.048
-SOBRECC1	-SOBRECC2	-SOBRECC3	-AUSENCIA	-IND.51
L 0.223	L 0.145	L 0.179	L 0.385	L 0.500
-SUBCCUP1	-SUBCCUP2	-SUBCCUP3	-SOBROCCPS	-IND.52
L 0.070	L 0.070	L 0.080	L 0.143	L 0.500
-EVOLPOP1	-CPTV	-IND.33	-PARQUE-S	
L 0.565	L 0.337	L 0.393	L 0.365	
-PARQUE-1	-EVOLPOP2	-PARQUE-3	-SUBOCCPS	
L 0.141	L 0.217	L 0.349	L 0.087	
	-PARQUE-2			
	L 0.231			

- GOAL --- Indicador de Carência
- AUSENCIA --- Ausência de Secundário
- BASIC01 --- Carência de Infra-estruturas do Ensino Básico - 12 Ciclo
- BASIC02 --- Carência de Infra-estruturas do Ensino Básico - 22 Ciclo
- BASIC03 --- Carência de Infra-estruturas do Ensino Básico - 32 Ciclo
- CPTV --- Ensino Preparatório Indirecto
- DEMOGRAF --- Crescimento Demográfico
- EVOLPOP1 --- Evolução da População Escolar do Ensino Básico - 12 Ciclo
- EVOLPOP2 --- Evolução da População Escolar do Ensino Básico - 22 Ciclo
- IND.33 --- Projecção do Crescimento da Pop. Ens. Bás. - 32 Ciclo, 1987-1995
- IND.31 --- Taxa de Crescimento Populacional 1981-1985
- IND.32 --- Taxa de Crescimento de Novos Eleitores 1970-1986
- PARQUE-1 --- Estado do Parque Escolar do Ensino Básico - 12 Ciclo
- PARQUE-2 --- Estado do Parque Escolar do Ensino Básico - 22 Ciclo
- PARQUE-3 --- Estado do Parque Escolar do Ensino Básico - 32 Ciclo
- PARQUE-S --- Estado do Parque Escolar do Ensino Secundário
- SECUND --- Carência de Infra-estruturas do Ensino Secundário
- SOBRECC1 --- Sobre-ocupação de Infra-estruturas do Ensino Básico - 12 Ciclo
- SOBRECC2 --- Sobre-ocupação de Infra-estruturas do Ensino Básico - 22 Ciclo
- SOBRECC3 --- Sobre-ocupação de Infra-estruturas do Ensino Básico - 32 Ciclo
- SOBROCCPS --- Sobre-ocupação de Infra-estruturas do Ensino Secundário
- SUBCCUP1 --- Sub-ocupação de Infra-estruturas do Ensino Básico - 12 Ciclo
- SUBCCUP2 --- Sub-ocupação de Infra-estruturas do Ensino Básico - 22 Ciclo
- SUBCCUP3 --- Sub-ocupação de Infra-estruturas
- SUBOCCPS --- Índice de sub-ocupação no Sec.º Parc. turnas com menos de 15 alun
- LOCAL PRIORITY; PRIORITY RELATIVE TO PARENT

0				
BASIC01	0	0	0	0
L 0.515				

SOBREOC1	SUBOCUP1	EVOLPOP1	PARQUE-1
L 0.223	L 0.070	L 0.565	L 0.141
-IND.111	-IND.121	-IND.131	-URB-1
L 0.154	L 0.462	L 0.438	L 0.210
-IND.112	-IND.122	-IND.132	-EST-1
L 0.241	L 0.321	L 0.562	L 0.400
-IND.113	-IND.123		-EQUIESP1
L 0.118	L 0.213		L 0.257
-IND.114			-PART-1
L 0.185			L 0.133
-IND.115			
L 0.087			
-IND.116			
L 0.077			
-IND.117			
L 0.138			

- BASIC01 --- Carência de Infra-estruturas do Ensino Básico - 12 Ciclo
- EQUIESP1 --- Indicador de Carência de Equipamentos Específicos
- EST-1 --- Indicador do Estado do Parque no Ensino Básico - 1 Ciclo
- EVOLPOP1 --- Evolução da População Escolar do Ensino Básico - 12 Ciclo
- IND.111 --- Proporção de Estabelecimentos com 2 Lugares e uma Sala
- IND.112 --- Proporção de Estabelecimentos com 3 Lugares e uma Sala
- IND.113 --- Proporção de Estabelecimentos com 3 Lugares e 2 Salas
- IND.114 --- Proporção de Estabelecimentos com 4 Lugares e 2 Salas
- IND.115 --- Proporção de Estabelecimentos com 4 Lugares e 3 Salas
- IND.116 --- Proporção de Estabelecimentos com Nº Lugares > Nº Salas e > 4
- IND.117 --- Proporção de Estabelecimentos com (Pop. Escolar / Nº Salas) > 24
- IND.121 --- Proporção de Estabelecimentos com 10 ou menos alunos
- IND.122 --- Proporção de Estabelecimentos com Nº de Alunos entre 11 e 15
- IND.123 --- Proporção de Estabelecimentos com Pop. Esc. / Num. Salas < 12
- IND.131 --- Taxa de Crescimento da Pop. Escolar no Ens. Prim. entre 1982-87
- IND.132 --- Projecção da Taxa Cresc. da Pop. do Ens. Bás. 12 Ciclo 1987-1995
- PARQUE-1 --- Estado do Parque Escolar do Ensino Básico - 12 Ciclo
- PART-1 --- Indicador de partilha das instalações com outros graus de ensino
- SOBREOC1 --- Sobre-ocupação de Infraestruturas do Ensino Básico - 12 Ciclo
- SUBOCUP1 --- Sub-ocupação de Infraestruturas do Ensino Básico - 12 Ciclo
- URB-1 --- Indicador de Carência de Urbanização no Ensino Básico - 1 Ciclo
- L --- LOCAL PRIORITY: PRIORITY RELATIVE TO PARENT

0

BASIC01	0	0	0	0
G 0.515				

SOBREOC1	SUBOCUP1	EVOLPOP1	PARQUE-1
G 0.115	G 0.036	G 0.291	G 0.073
-IND.111	-IND.121	-IND.131	-URB-1
G 0.018	G 0.017	G 0.127	G 0.015
-IND.112	-IND.122	-IND.132	-EST-1
G 0.028	G 0.012	G 0.154	G 0.029
-IND.113	-IND.123		-EQUIESP1
G 0.014	G 0.008		G 0.019
-IND.114			-PART-1
G 0.021			G 0.010
-IND.115			
G 0.010			
-IND.116			
G 0.009			
-IND.117			
G 0.016			

BASIC01 --- Carência de Infra-estruturas do Ensino Básico - 12 Ciclo
EQUIESP1 --- Indicador de Carência de Equipamentos Específicos
EST-1 --- Indicador do Estado do Parque no Ensino Básico - 1 Ciclo
EVOLPOP1 --- Evolução da População Escolar do Ensino Básico - 12 Ciclo
IND.111 --- Proporção de Estabelecimentos com 2 Lugares e uma Sala
IND.112 --- Proporção de Estabelecimentos com 3 Lugares e uma Sala
IND.113 --- Proporção de Estabelecimentos com 3 Lugares e 2 Salas
IND.114 --- Proporção de Estabelecimentos com 4 Lugares e 2 Salas
IND.115 --- Proporção de Estabelecimentos com 4 Lugares e 3 Salas
IND.116 --- Proporção de Estabelecimentos com Nº Lugares > Nº Salas e > 4
IND.117 --- Proporção de Estabelecimentos com (Pop. Escolar / Nº Salas) > 24
IND.121 --- Proporção de Estabelecimentos com 10 ou menos alunos
IND.122 --- Proporção de Estabelecimentos com Nº de Alunos entre 11 e 15
IND.123 --- Proporção de Estabelecimentos com Pop. Esc. / Num. Salas < 18
IND.131 --- Taxa de Crescimento da Pop. Escolar no Ens. Prim. entre 1982-87
IND.132 --- Projectão da Taxa Cresc. da Pop. do Ens. Bás. 12 Ciclo 1987-1995
PARQUE-1 --- Estado do Parque Escolar do Ensino Básico - 12 Ciclo
PART-1 --- Indicador de partilha das instalações com outros graus de ensino
SOBREOC1 --- Sobre-ocupação de Infraestruturas do Ensino Básico - 12 Ciclo
SUBOCUP1 --- Sub-ocupação de Infraestruturas do Ensino Básico - 12 Ciclo
URB-1 --- Indicador de Carência de Urbanização no Ensino Básico - 1 Ciclo
G --- GLOBAL PRIORITY: PRIORITY RELATIVE TO GOAL

0				
0	BASIC02	0	0	0
	G 0.205			

SOBREOC2	SUBOCUP2	CPTV	EVOLPOP2	PARQUE-2
G 0.030	G 0.014	G 0.069	G 0.045	G 0.047
-IND.211	-IND.221	-PESO	-IND.241	-URB-2
G 0.010	G 0.014	G 0.055	G 0.011	G 0.009
-IND.212		-ISOLAMT0	-IND.242	-EST-2
G 0.010		G 0.014	G 0.014	G 0.020
-IND.213			-IND.243	-EQUIESP2
G 0.006			G 0.019	G 0.014
-IND.214				-PART-2
G 0.004				G 0.005

- BASIC02 --- Carência de Infra-estruturas do Ensino Básico - 22 Ciclo
- CPTV --- Ensino Preparatório Indirecto
- EQUIESP2 --- Indicador de Carência de Equipamentos Específicos
- EST-2 --- Indicador do Estado do Parque no Ensino Básico - 2 Ciclo
- EVOLPOP2 --- Evolução da População Escolar do Ensino Básico - 22 Ciclo
- IND.211 --- Perc. Estab. Ens. Bás. - 22 Ciclo com Taxa de Ocup. sup.100% (Tip.)
- IND.212 --- Perc. Estab. Ens. Bás. - 22 Ciclo com Taxa Ocup. Sup. 100% (Cap.F.)
- IND.213 --- Perc. Pop. Ens. Bás. -22 Ciclo, 19Ano, com N0 médio Al/Turma sup. 25
- IND.214 --- Perc. Pop. Ens. Bás. -22 Ciclo, 22Ano, com N0 médio Al/Turma sup. 25
- IND.221 --- Índice de Sub-ocupação do Estabelec. do Ensino Básico - 22 Ciclo
- IND.241 --- Taxa de Crescimento Pop. Ens. Bás. - 22Ciclo no período 1983-1987
- IND.242 --- Projeção Crescimento Pop. Ens. Bás. - 22 Ciclo no período 1987-95
- IND.243 --- Rácio Entradas Ens. Primário 1987/(Cap.Tipol. Ens.Preparat.Directo/2)
- ISOLAMT0 --- Isolamento dos Estabelecimentos CPTV
- PARQUE-2 --- Estado do Parque Escolar do Ensino Básico - 22 Ciclo
- PART-2 --- Indicador de partilha das instalações com outros graus de ensino
- PESO --- Proporção de Ensino CPTV no Ensino Básico -22 Ciclo
- SOBREOC2 --- Sobre-ocupação de Infraestruturas do Ensino Básico - 22 Ciclo
- SUBOCUP2 --- Sub-ocupação de Infraestruturas do Ensino Básico - 22 Ciclo
- URB-2 --- Indicador de Carencia de Urbanizacao no Ensino Basico - 2 Ciclo
- G --- GLOBAL PRIORITY: PRIORITY RELATIVE TO GOAL

0

0	0	BASIC03	0	0
		G 0.185		

SOBREOC3	SUBOCUP3	IND.33	PARQUE-3
G 0.033	G 0.015	G 0.073	G 0.064
-IND.311			-URB-3
G 0.008			G 0.013
-IND.312			-EST-3
G 0.016			G 0.023
-ALUNTUR3			-EQUIESP3
G 0.008			G 0.022
			-PART-3
			G 0.006

- ALUNTUR3 --- Perc. Pop. Ens.Bas.3 com N9 Médio Alunos / Turma > 25
- BASIC03 --- Carência de Infra-estruturas do Ensino Básico - 3º Ciclo
- EQUIESP3 --- Indicador de Carência de Equipamentos Específicos
- EST-3 --- Indicador do Estado do Parque no Ensino Básico - 3º Ciclo
- IND.311 --- Perc. Pop. Ens.Bas.3 em Estab. com Taxa de Ocup. sup.100% (Tip.)
- IND.312 --- Taxa de Crescimento Pop.Ens.Bás. - 3ºCiclo no período 1983-1987
- IND.33 --- Projecção do Crescimento da Pop. Ens. Bás. - 3º Ciclo, 1987-1995
- PARQUE-3 --- Estado do Parque Escolar do Ensino Básico - 3º Ciclo
- PART-3 --- Indicador de partilha das instalações com outros graus de ensino
- SOBREOC3 --- Sobre-ocupação de Infraestruturas do Ensino Básico - 3º Ciclo
- SUBOCUP3 --- Sub-ocupação de Infra-estruturas
- URB-3 --- Indicador de Carência de Urbanização no Ensino Básico - 3º Ciclo
- G --- GLOBAL PRIORITY: PRIORITY RELATIVE TO GOAL

0

0	0	0	!SECUND!	0
! G 0.047!				

!AUSENCIA!	!SOBROCPS!	!PARQUE-S!	!SUBOCUPS!
! G 0.018!	! G 0.007!	! G 0.018!	! G 0.004!
!-IND.411!	!-IND.421!	!-URB-S!	!-IND.441!
! G 0.004!	! G 0.002!	! G 0.004!	! G 0.001!
!-IND.412!	!-IND.422!	!-EST-S!	!-IND.442!
! G 0.011!	! G 0.002!	! G 0.008!	! G 0.001!
!-IND.413!	!-ALUNTURS!	!-EQUIESPS!	!-IND.443!
! G 0.004!	! G 0.002!	! G 0.005!	! G 0.002!
		!-PART-S!	
		! G 0.002!	

- ALUNTURS --- Perc. Pop. Ens. Sec. com Nº Médio Alunos / Turma > 25
- AUSENCIA --- Ausência de Secundário
- EQUIESPS --- Indicador de Carência de Equipamentos Específicos
- EST-S --- Indicador do Estado do Parque no Ensino Secundário
- IND.411 --- Ausencia de Infra-estruturas mas Ens. Sec. ministrado
- IND.412 --- Ausencia de Infra-estruturas e Ens. Sec. nao ministrado
- IND.413 --- Funcionamento do Secundario sem 12 ano
- IND.421 --- Perc. Estab. Ens. Secundário com Taxa de Ocup. sup.100% (Tip.)
- IND.422 --- Perc. Pop. Ens. Sec. em Estab. com Taxa de Ocup. sup.100% (Tip.)
- IND.441 --- 10 ano
- IND.442 --- 11 ano
- IND.443 --- 12 ano
- PARQUE-S --- Estado do Parque Escolar do Ensino Secundário
- PART-S --- Indicador de partilha das instalaçoes com outros graus de ensino
- SECUND --- Carência de Infra-estruturas do Ensino Secundário
- SOBROCPS --- Sobre-ocupação de Infraestruturas do Ensino Secundário
- SUBOCUPS --- Índice de sub-ocupação no Sec.= Perc. turmas com menos de 15 alun
- URB-S --- Indicador de Carencia de Urbanizaçao no Ensino Secundario
- G --- GLOBAL PRIORITY: PRIDRITY RELATIVE TO GOAL


```

      0
      |
      | 0 0 0 0 0
      |-----|
      |         | | |
      |-----|
      |SOBREOC1| 0 0 0
      |         | | |
      | G 0.115|
      |-----|
  
```

IND.111	IND.112	IND.113	IND.114	IND.115	IND.116	IND.117
G 0.018	G 0.028	G 0.014	G 0.021	G 0.010	G 0.009	G 0.016
					!-IND.1161	!-IND.1171
					! G 0.002	! G 0.006
					!-IND.1162	!-IND.1172
					! G 0.003	! G 0.010
					!-IND.1163	
					! G 0.004	

- IND.111 --- Proporção de Estabelecimentos com 2 Lugares e uma Sala
- IND.112 --- Proporção de Estabelecimentos com 3 Lugares e uma Sala
- IND.113 --- Proporção de Estabelecimentos com 3 Lugares e 2 Salas
- IND.114 --- Proporção de Estabelecimentos com 4 Lugares e 2 Salas
- IND.115 --- Proporção de Estabelecimentos com 4 Lugares e 3 Salas
- IND.116 --- Proporção de Estabelecimentos com Nº Lugares > Nº Salas e > 4
- IND.1161 --- Lugares / Salas < 2
- IND.1162 --- Lugares / Salas = 2
- IND.1163 --- Lugares / Salas > 2
- IND.117 --- Proporção de Estabelecimentos com (Pop. Escolar / Nº Salas) > 24
- IND.1171 --- Proporção de Estabel. com (Pop. Escolar / Nº Salas) > 24 e < 31
- IND.1172 --- Proporção de Estabelecimentos com (Pop. Escolar / Nº Salas) > 30
- SOBREOC1 --- Sobre-ocupação de Infraestruturas do Ensino Básico - 1º Ciclo

G --- GLOBAL PRIORITY: PRIORITY RELATIVE TO GOAL

		0		
		0 0 0 0 0		
0	0		!EVOLPOP1!	
			! G 0.291!	
			!IND.131 !	
			! G 0.127!	
			!IND.132 !	
			! G 0.154!	

- EVOLPOP1 --- Evoluçao da Populaçao Escolar do Ensino Básico - 12 Ciclo
IND.131 --- Taxa de Crescimento da Pop. Escolar no Ens. Prim. entre 1982-87
IND.132 --- Projecçao da Taxa Cresc. da Pop. do Ens. Bás. 12 Ciclo 1987-1995
G --- GLOBAL PRIORITY: PRIORITY RELATIVE TO GOAL

0				

0	0	0	0	0
0	0	0	PARQUE-1	
			6 0.073	

URB-1	EST-1	EQUIESP1	PART-1
6 0.015	6 0.029	6 0.019	6 0.010
-IND.1411	-IND.1421	-IND.1431	-IND.1441
6 0.006	6 0.009	6 0.013	6 0.003
-IND.1412	-IND.1422	-IND.1432	-IND.1442
6 0.009	6 0.004	6 0.006	6 0.002
	-IND.1423		-IND.1443
	6 0.015		6 0.005

- EQUIESP1 --- Indicador de Carência de Equipamentos Específicos
 - EST-1 --- Indicador do Estado do Parque no Ensino Básico - 1 Ciclo
 - IND.1411 --- Indicador de Carência de Localização no Ens. Bas. - 12 Ciclo
 - IND.1412 --- Indicador de Carência de Salubridade no Ens. Bas. - 12 Ciclo
 - IND.1421 --- Percent. área Coberta Ens. Bas. 12 Ciclo em Mau Estado Conservação
 - IND.1422 --- Indicador de Escassez de área não Coberta do Ens. Bas. - 12 Ciclo
 - IND.1423 --- Percentagem de Salas de Aula Inadequadas no Ens. Bas. - 12 Ciclo
 - IND.1431 --- Percent. de Instalações Sem Cantina no Básico 1
 - IND.1432 --- Percent. de Instalações Sem Campos Jogos no Básico 1
 - IND.1441 --- Percent. de Estabelec. cujas Instal. são partilhadas com Pre-Esc.
 - IND.1442 --- Percent. de Estabelec. cujas Instal. são partilhadas com Básico-2
 - IND.1443 --- Parc. Estab. cujas Instal. são partilhadas com Pre-Esc. e Básico-2
 - PARQUE-1 --- Estado do Parque Escolar do Ensino Básico - 12 Ciclo
 - PART-1 --- Indicador de partilha das instalações com outros graus de ensino
 - URB-1 --- Indicador de Carência de Urbanização no Ensino Básico - 1 Ciclo
- 3 --- GLOBAL PRIORITY: PRIORITY RELATIVE TO GOAL

```

      0
      |
      0 0 0 0 0
      |
      |-----|
      |SOBREOC2| 0 0 0 0
      |-----|
      | G 0.030|
      |-----|
  
```

IND.211	IND.212	IND.213	IND.214
G 0.010	G 0.010	G 0.006	G 0.004
-IND.2111	-IND.2121		
G 0.003	G 0.003		
-IND.2112	-IND.2122		
G 0.007	G 0.007		

- IND.211 --- Perc. Estab. Ens. Bas. - 2º Ciclo com Taxa de Coup. sup.100% (Tip.)
- IND.2111 --- Perc. Est. Ens. Bas. - 2º Ciclo com Taxa de Coup. > 100% e <151% (Tip)
- IND.2112 --- Perc. Est. Ens. Bas. - 2º Ciclo com Taxa de Coup. > 150% (Tip)
- IND.212 --- Perc. Estab. Ens. Bas. - 2º Ciclo com Taxa Coup. Edo. 100% (Cap.F.)
- IND.2121 --- Perc. Estab. Ens. Bas. - 2º Ciclo com Taxa Coup. >100% e <151% (Cap.F.)
- IND.2122 --- Perc. Estab. Ens. Bas. - 2º Ciclo com Taxa Coup. > 150% (Cap.F.)
- IND.213 --- Perc. Pop. Ens. Bas. - 1º Ciclo, 1º Ano, com N2médio A1/Turma sup. 25
- IND.214 --- Perc. Pop. Ens. Bas. - 1º Ciclo, 2º Ano, com N2médio A1/Turma sup. 25
- SOBREOC2 --- Sobre-ocupação de Infraestruturas de Ensino Básico - 2º Ciclo

G --- GLOBAL PRIORITY: PRIORITY RELATIVE TO GOAL

0				

0	0	0	0	0

0	0	!CPTV	!	0

! G 0.069!				

!				

!PESO		! ISOLAMT2!		
! G 0.055!		! G 0.014!		
-----		-----		
!-IND.2311		!-IND.2321		
! G 0.044		! G 0.004		
-----		-----		
!-IND.2312		!-IND.2322		
! G 0.011		! G 0.010		

- CPTV --- Ensino Preparatório Indirecto
- IND.2311 --- Percentagem Alunos Ensino Básico - 2º Ciclo em CPTV
- IND.2312 --- Percentagem Estabelecimentos CPTV no Ensino Básico - 2º Ciclo
- IND.2321 --- Perc. Est. CPTV dist. sup. a 5 Km do Est. Ens. Bas-2ºC mais próximo
- IND.2322 --- Perc. Al. em Est. CPTV dist. sup. 5Km Est. Ens. Bas.-2ºC. mais próximo
- ISOLAMT2 --- Isolamento dos Estabelecimentos CPTV
- PESO --- Proporção de Ensino CPTV no Ensino Básico -2º Ciclo
- G --- GLOBAL PRIORITY: PRIORITY RELATIVE TO GOAL

			0			

			0	0	0	0
0	0	0		EVOLPOP2		0

			G	0.045		

IND.241		IND.242		IND.243		
G	0.011	G	0.014	G	0.013	

- EVOLPOP2 --- Evoluçao da Populaçao Escolar do Ensino Básico - 2o Ciclo
- IND.241 --- Taxa de Crescimento Pop. Ens. Bás. - 2o Ciclo no período 1993-1997
- IND.242 --- Projeção Crescimento Pop. Ens. Bás. - 2o Ciclo no período 1997-95
- IND.243 --- Rácio Entradas Ens. Primário 1997 / (Cap. Típic. Ens. Prep. Directo / 2
- G --- GLOBAL PRIORITY: PRIORITY RELATIVE TO GOAL

0
 0 0 0 0 0

0 0 0 0 | PARQUE-2 |
 | G 0.047 |

URB-2	EST-2	EQUIESP2	PART-2
G 0.009	G 0.020	G 0.014	G 0.005
-IND.2511 G 0.003	-IND.2521 G 0.006	-IND.2531 G 0.006	-IND.2541 G 0.001
-IND.2512 G 0.005	-IND.2522 G 0.003	-IND.2532 G 0.004	-IND.2542 G 0.003
	-IND.2523 G 0.011	-IND.2533 G 0.002	-IND.2543 G 0.002

- EQUIESP2 --- Indicador de Carência de Equipamentos Específicos
- EST-2 --- Indicador do Estado do Parque no Ensino Básico - 2 Ciclo
- IND.2511 --- Indicador de Carência de Localização no Ens. Bás. - 2º Ciclo
- IND.2512 --- Indicador de Carência de Salubridade no Ens. Bás. - 2º Ciclo
- IND.2521 --- Percent. área Coberta Ens. Bás. 2º Ciclo em Mau Estado Conservação
- IND.2522 --- Indicador de Escassez de área não Coberta no Ens. Bás. - 2º Ciclo
- IND.2523 --- Percentagem de Salas de Aula Inadequadas no Ens. Bás. - 2º Ciclo
- IND.2531 --- Percent. de Instalações Sem Cantina no Básico 2
- IND.2532 --- Percent. de Instalações Sem Ginásio no Básico 2
- IND.2533 --- Percent. de Instalações Sem Campos Jogos no Básico 2
- IND.2541 --- Percent. de Estabelec. cujas Instal. são partilhadas com Básico 1
- IND.2542 --- Percent. de Estab. cujas Instal. são partilhadas com Secundário
- IND.2543 --- Perc. Est. cujas Instal. são partilhadas com Básico 3 e Secundário
- PARQUE-2 --- Estado do Parque Escolar do Ensino Básico - 2º Ciclo
- PART-2 --- Indicador de partilha das instalações com outros graus de ensino
- URB-2 --- Indicador de Carência de Urbanização no Ensino Básico - 2º Ciclo
- G --- GLOBAL PRIORITY: PRIORITY RELATIVE TO GOAL

0			
0	0	0	0
0	0	0	0
! PARQUE-3 !			
! G 0.064 !			

! URB-3 !	! EST-3 !	! EQUIESP3 !	! PART-3 !
! G 0.013 !	! G 0.023 !	! G 0.022 !	! G 0.006 !
! -IND.3411 !	! -IND.3421 !	! -IND.3431 !	! -IND.3441 !
! G 0.005 !	! G 0.007 !	! G 0.006 !	! G 0.001 !
! -IND.3412 !	! -IND.3422 !	! -IND.3432 !	! -IND.3442 !
! G 0.008 !	! G 0.004 !	! G 0.004 !	! G 0.002 !
	! -IND.3423 !	! -IND.3433 !	! -IND.3443 !
	! G 0.013 !	! G 0.002 !	! G 0.003 !
		! -IND.3434 !	
		! G 0.009 !	

- EQUIESP3 --- Indicador de Carência de Equipamentos Específicos
- EST-3 --- Indicador do Estado do Parque no Ensino Básico - 3º Ciclo
- IND.3411 --- Indicador de Carência de Localização no Ens. Bás. - 3º Ciclo
- IND.3412 --- Indicador de Carência de Salubridade no Ens. Bás. - 3º Ciclo
- IND.3421 --- Percent. área Coberta Ens. Bás. 3º Ciclo em Mau Estado Conservaçã
- IND.3422 --- Indicador de Escassez de área não Coberta no Ens. Bás. - 3º Ciclo
- IND.3423 --- Percentagem de Salas de Aula Inadequadas no Ens. Bás. - 3º Ciclo
- IND.3431 --- Percent. de Instalações Sem Cantina no Básico 3
- IND.3432 --- Percent. de Instalações Sem Ginásio no Básico 3
- IND.3433 --- Percent. de Instalações Sem Campos Jogos no Básico 3
- IND.3434 --- Percent. de Estab. sem Oficinas e Similares no Básico 3
- IND.3441 --- Percent. de Estabelec. cujas Instal. são partilhadas com Básico 2
- IND.3442 --- Percent. de Estab. cujas Instal. são partilhadas com Secundário
- IND.3443 --- Perc. Estab. cujas Instal. são partilhadas com Básico 2 e Secundário
- PARQUE-3 --- Estado do Parque Escolar do Ensino Básico - 3º Ciclo
- PART-3 --- Indicador de partilha das instalações com outros graus de ensino
- URB-3 --- Indicador de Carência de Urbanização no Ensino Básico - 3º Ciclo
- G --- GLOBAL PRIORITY: PRIORITY RELATIVE TO GOAL

0
|

0 0 0 0 0

| | | |
|-----|
| AUSENCIA | 0 0 0
G 0.018

IND.411		IND.412		IND.413	
G 0.004		G 0.011		G 0.004	

- AUSENCIA --- Ausência de Secundario
- IND.411 --- Ausencia de Infra-estruturas mas Ens. Sec. ministrado
- IND.412 --- Ausencia de Infra-estruturas e Ens. Sec. nao ministrado
- IND.413 --- Funcionamento do Secundario sem 12 ano

- G --- GLOBAL PRIORITY: PRIORITY RELATIVE TO GOAL

0					
0	0	0	0	0	

0	SOBROCCPS!			0	0
G 0.007!					

IND.421	IND.422	ALUNTURS
G 0.002	G 0.002	G 0.002

-IND.4211	-IND.4221	-IND.4231
G 0.001	G 0.001	G 0.001
-IND.4212	-IND.4222	-IND.4232
G 0.002	G 0.002	G 0.001
		-IND.4233
		G 0.000

- ALUNTURS --- Perc. Pop. Ens. Sec. com N2 Médio Alunos / Turma > 25.
- IND.421 --- Perc. Estab. Ens. Secundário com Taxa de Ocup. sup.100% (Tib.)
- IND.4211 --- entre 100 e 150
- IND.4212 --- superior a 150
- IND.422 --- Perc. Pop. Ens. Sec. em Estab. com Taxa de Ocup. sup.100% (Tib.)
- IND.4221 --- entre 100 e 150
- IND.4222 --- superior a 150
- IND.4231 --- Perc. Pop. Ens. Secundário, 109 Ano, com Alunos / Turma > 25
- IND.4232 --- Perc. Pop. Ens. Secundário, 119 Ano, com Alunos / Turma > 25
- IND.4233 --- Perc. Pop. Ens. Secundário, 129 Ano, com Alunos / Turma > 25
- SOBROCCPS --- Sobre-ocupação de Infraestruturas do Ensino Secundário
- G --- GLOBAL PRIORITY: PRIORITY RELATIVE TO GOAL

0		
0	0	0
0	0	0
0	0	0
SUBCLIPS:		
B 0.004:		
IND. 441	IND. 442	IND. 443
B 0.001	B 0.001	B 0.002

IND. 441 --- 10 and
 IND. 442 --- 11 and
 IND. 443 --- 12 and
 SUBCLIPS --- Indica de amplexacao no Sec. = Perc. tiradas das molas de 15 mil
 B --- ELIGIBLE PRIORITY PROPERTY RELATIVE TO BCAL